

# Съемные клеммные колодки

## Технические характеристики

По вопросам продаж и поддержки обращайтесь:

Алматы (727)345-47-04  
Ангарск (3955)60-70-56  
Архангельск (8182)63-90-72  
Астрахань (8512)99-46-04  
Барнаул (3852)73-04-60  
Белгород (4722)40-23-64  
Благовещенск (4162)22-76-07  
Брянск (4832)59-03-52  
Владивосток (423)249-28-31  
Владикавказ (8672)28-90-48  
Владимир (4922)49-43-18  
Волгоград (844)278-03-48  
Вологда (8172)26-41-59  
Воронеж (473)204-51-73  
Екатеринбург (343)384-55-89

Иваново (4932)77-34-06  
Ижевск (3412)26-03-58  
Иркутск (395)279-98-46  
Казань (843)206-01-48  
Калининград (4012)72-03-81  
Калуга (4842)92-23-67  
Кемерово (3842)65-04-62  
Киров (8332)68-02-04  
Коломна (4966)23-41-49  
Кострома (4942)77-07-48  
Краснодар (861)203-40-90  
Красноярск (391)204-63-61  
Курск (4712)77-13-04  
Курган (3522)50-90-47  
Липецк (4742)52-20-81

Магнитогорск (3519)55-03-13  
Москва (495)268-04-70  
Мурманск (8152)59-64-93  
Набережные Челны (8552)20-53-41  
Нижний Новгород (831)429-08-12  
Новокузнецк (3843)20-46-81  
Ноябрьск (3496)41-32-12  
Новосибирск (383)227-86-73  
Омск (3812)21-46-40  
Орел (4862)44-53-42  
Оренбург (3532)37-68-04  
Пенза (8412)22-31-16  
Петрозаводск (8142)55-98-37  
Псков (8112)59-10-37  
Пермь (342)205-81-47

Ростов-на-Дону (863)308-18-15  
Рязань (4912)46-61-64  
Самара (846)206-03-16  
Санкт-Петербург (812)309-46-40  
Саратов (845)249-38-78  
Севастополь (8692)22-31-93  
Саранск (8342)22-96-24  
Симферополь (3652)67-13-56  
Смоленск (4812)29-41-54  
Сочи (862)225-72-31  
Ставрополь (8652)20-65-13  
Сургут (3462)77-98-35  
Сыктывкар (8212)25-95-17  
Тамбов (4752)50-40-97  
Тверь (4822)63-31-35

Тольятти (8482)63-91-07  
Томск (3822)98-41-53  
Тула (4872)33-79-87  
Тюмень (3452)66-21-18  
Ульяновск (8422)24-23-59  
Улан-Удэ (3012)59-97-51  
Уфа (347)229-48-12  
Хабаровск (4212)92-98-04  
Чебоксары (8352)28-53-07  
Челябинск (351)202-03-61  
Череповец (8202)49-02-64  
Чита (3022)38-34-83  
Якутск (4112)23-90-97  
Ярославль (4852)69-52-93

Россия +7(495)268-04-70

Казахстан +(727)345-47-04

Беларусь +(375)257-127-884

Узбекистан +998(71)205-18-59

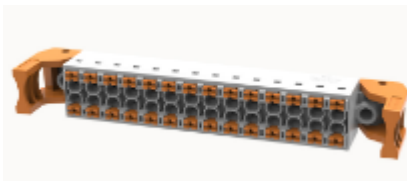
Киргизия +996(312)96-26-47

эл.почта: [doc@nt-rt.ru](mailto:doc@nt-rt.ru) || сайт: <https://degson.nt-rt.ru>



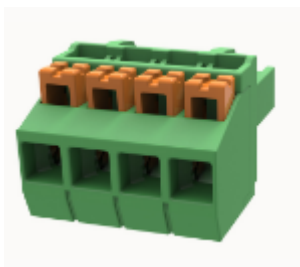
## PCB Plug

Mating with PCB sockets, as the wiring part, the product series are complete, providing a variety of wiring methods



## 15EDGKNHGM-6.35

Pluggable terminal blocks, Rated current: 6A. Rated voltage (III/2)  
: 400V, pitch: 6.35mm, Color: grey, Contact surface



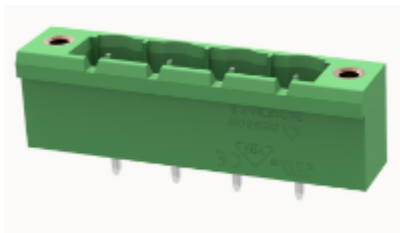
## 2EDGKDT-5.0

Pluggable terminal blocks, Rated current:16A. Rated voltage(III/2) :320V, Pitch:7.62mm, Color:green, Contact surface



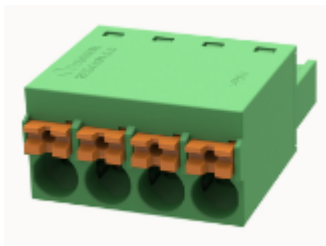
## 2EDGKDGB-7.62

Pluggable terminal blocks, Rated current:20A. Rated voltage(III/2) :400V, Pitch:7.62mm, Color:green, Contact surface



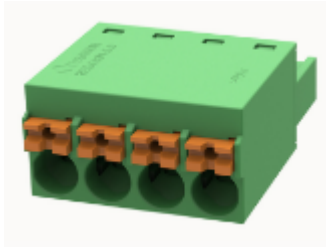
## 2EDGVM-7.5

Pluggable terminal blocks, Rated current:20A. Rated voltage (III/2) :400V, Pitch:3.5mm, Color:green, Contact surface



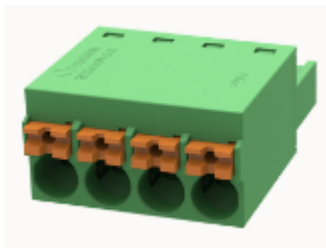
## 2EDGKN-5.0

Pluggable terminal blocks, Rated current:12A. Rated voltage (III/2)  
:400V, pitch:5.0mm, Color:green, Contact surface



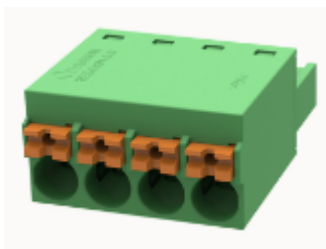
### **2EDGKN-5.08**

Pluggable terminal blocks, Rated current:12A. Rated voltage (III/2)  
:400V, pitch:5.08mm, Color:green, Contact surface



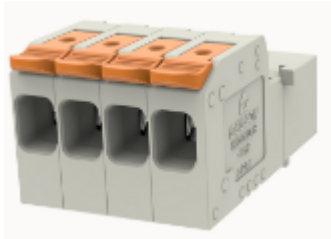
### **2EDGKNM-5.0**

Pluggable terminal blocks, Rated current:12A. Rated voltage (III/2)  
:400V, pitch:5.0mm, Color:green, Contact surface



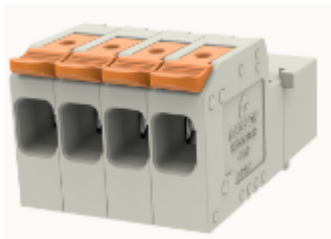
## 2EDGKNM-5.08

Pluggable terminal blocks, Rated current:12A. Rated voltage (III/2)  
:400V, pitch:5.08mm, Color:green, Contact surface



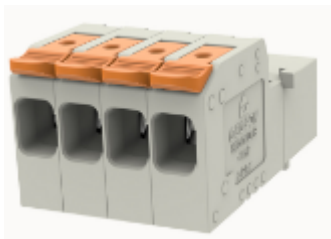
## 15EDGKGB-3.5

Pluggable terminal blocks, Rated current:7A. Rated voltage (III/2)  
:160V, pitch:3.5mm, Color:green, Contact surface



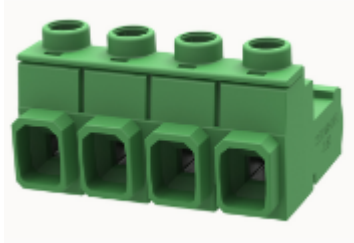
## 2EDGKGB-5.08

Pluggable terminal blocks, Rated current:12A. Rated voltage (III/2)  
:400V, pitch:5.08mm, Color:green, Contact surface



## 5EDGKDLR-7.62

Pluggable terminal blocks, Rated current : 41A, Rated voltage (III/2) : 1000V, width : 10mm<sup>2</sup>, pitch:7.62mm, Color : gray, Connection method : Push-in spring connection, Contact surface



### **2EDGKHR-7.62**

Pluggable terminal blocks, Rated current:16A. Rated voltage(III/2) :1000V, Pitch:7.62mm, Color:Green, Contact surface



### **2EDGKCM-5.08-HP**

Pluggable terminal blocks, Rated current:12A. Rated voltage (III/2):800V ,Pitch:5.08mm, Color:Green, Contact surface



### **2EDGKC-5.08-HP**

Pluggable terminal blocks, Rated current:12A. Rated voltage(III/2: 800V, Pitch:5.08mm, Color:Green, Contact surface



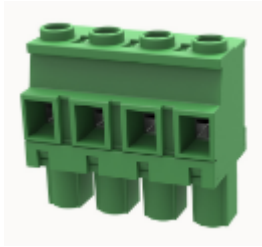
### **2EDGKA-HV-7.62**

Pluggable terminal blocks, Rated current:18A. Rated voltage (III/2): 1000V, Pitch:7.62mm, Color: Green, Contact surface



### **2EDGKB-HV-7.62**

Pluggable terminal blocks, Rated current:18A. Rated voltage (III/2): 1000V, Pitch:7.62mm,  
Color: Green, Contact surface



### **2EDGKNHM-5.08**

Pluggable terminal blocks, Rated current:8A. Rated voltage (III/2)  
:400V, pitch:5.08mm, Color:black, Contact surface



### **9EDGKD-HC-7.5**

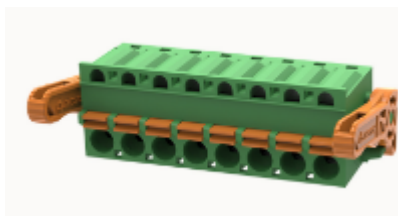
Pluggable terminal blocks, Rated current:25A. Rated voltage (III/3)  
:630V, pitch:7.5mm, Color:black, Contact surface





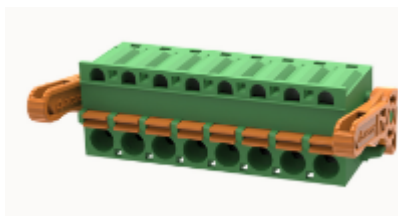
### **9EDGKD-HC-5.0**

Plug in connector, nominal current: 20A. Rated voltage (III/3): 500V, pin spacing: 5.0mm, color: black, contact surface: Sn



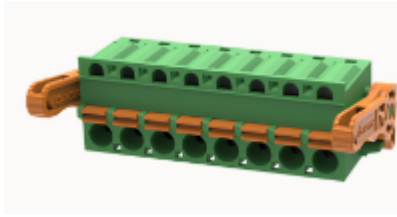
### **5EDGKHR-7.62**

Pluggable terminal blocks, Rated current: 41A. Rated voltage (III/2): 1000V, pitch: 7.62mm, Color: Green, Contact surface



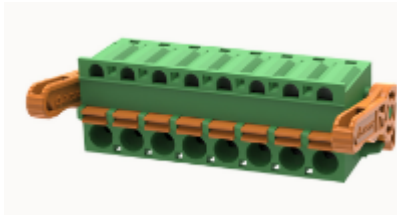
### **15EDGKDGB-3.5**

Pluggable terminal blocks, Rated current: 12A. Rated voltage (III/2): 250V, pitch: 3.5mm, Color: green, Contact surface



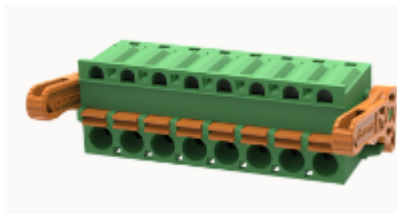
### **2EDGKDGB-5.08**

Pluggable terminal blocks, Rated current: 20A. Rated voltage (III/2)  
: 320V, pitch: 5.08mm, Color: green, Contact surface



### **9EDGKG-5.08**

Pluggable terminal blocks, Rated current: 16A. Rated voltage (III/2)  
: 160V, pitch: 5.08mm, Color: black, Contact surface



### **9EDGKD-7.62**

Pluggable terminal blocks, Rated current: 20A. Rated voltage (III/2)  
: 630V, pitch: 7.62mm, Color: black, Contact surface



### **2EDGKNH-5.08**

Pluggable terminal blocks, Rated current: 8A. Rated voltage (III/2)  
: 400V, pitch: 5.08mm, Color: black, Contact surface



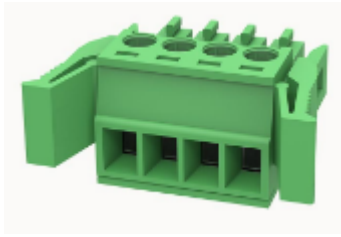
### **9EDGKS-7.62**

Pluggable terminal blocks, Rated current: 29A. Rated voltage (III/2)  
: 500V, pitch: 7.62mm, Color: black, Contact surface



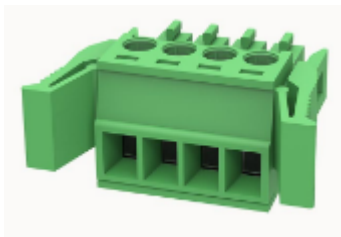
### **9EDGKS-10.16**

Pluggable terminal blocks, Rated current: 78.3A. Rated voltage (III/2)  
: 1000V, pitch: 10.16mm, Color: black, Contact surface : Ag



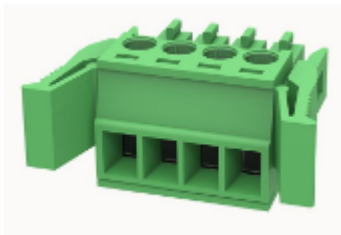
### **15EDGKG-3.5**

Pluggable Terminal Blocks, Rated current : 7A. Rated voltage ( II/2 ) : 250V, pitch : 3.5mm, Color : green, Contact surface



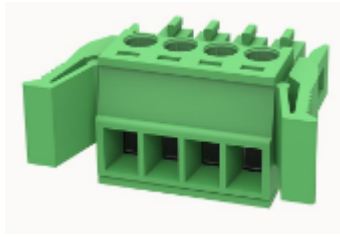
### **15EDGKNH-3.5**

Pluggable Terminal Blocks, nominal current 9.5A, Rated voltage ( II/2 ) : 320V, pitch: 3.5mm, Color: green, Contact surface



### **15EDGKNHM-3.5**

Pluggable Terminal Blocks, nominal current 9.5A, Rated voltage ( II/2 ) : 320V, pitch: 3.5mm, Color: green, Contact surface

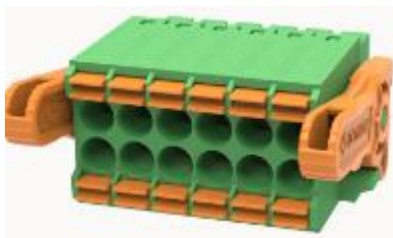


### **15EDGKNHG-3.5**

Pluggable Terminal Blocks,nominal current9.5A,Rated voltage( II /2) : 320V,pitch:3.5mm,Color:green,Contact surface

### **5EDGKDL-7.62**

Pluggable Terminal Blocks, Rated current : 41A, Rated valtage (III/2) : 1000V, Cross section : 6mm<sup>2</sup>, Pitch : 7.62mm, Color : Green, Connection method : Push-in spring connection, Color : Green, Contact surface : Tin



### **15EDGK-3.5**

Pluggable terminal blocks,Rated current:7A.Rated voltage (II/2) :250V,pitch:3.5mm,Color:green,Contact surface



### **15EDGK-3.81**

Pluggable terminal blocks, Rated current: 7A. Rated voltage (II/2)  
: 250V, pitch: 3.81mm, Color: green, Contact surface



### **15EDGK-5.08**

Pluggable terminal blocks, Rated current: 7A. Rated voltage (II/2)  
: 450V, pitch: 5.08mm, Color: green, Contact surface



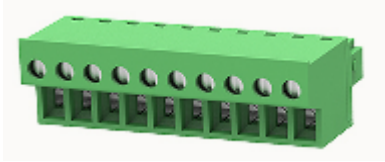
### **15EDGKA-3.5**

Pluggable terminal blocks, Rated current: 7A. Rated voltage (II/2)  
: 250V, pitch: 3.5mm, Color: green, Contact surface



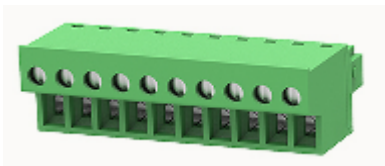
### 15EDGKA-3.81

Pluggable terminal blocks, Rated current: 7A. Rated voltage (II/2)  
: 250V, pitch: 3.81mm, Color: green, Contact surface



### 15EDGKAM-3.5

Pluggable terminal blocks, Rated current: 7A. Rated voltage (II/2)  
: 250V, pitch: 3.5mm, Color: green, Contact surface



### 15EDGKAM-3.81

Pluggable terminal blocks, Rated current: 7A. Rated voltage (II/2)  
: 250V, pitch: 3.81mm, Color: green, Contact surface



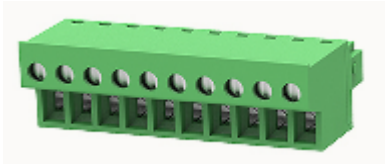
### 15EDGKB-3.5

Pluggable terminal blocks, Rated current: 7A. Rated voltage (II/2)  
: 250V, pitch: 3.5mm, Color: green, Contact surface



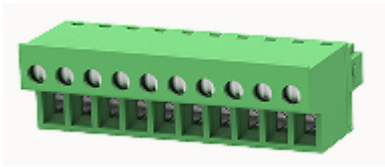
### 15EDGKB-3.81

Pluggable terminal blocks, Rated current: 7A. Rated voltage (II/2)  
: 250V, pitch: 3.81mm, Color: green, Contact surface



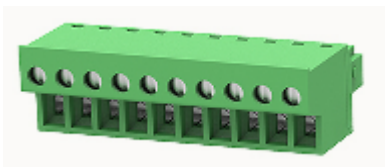
### 15EDGKBM-3.5

Pluggable terminal blocks, Rated current: 7A. Rated voltage (II/2)  
: 250V, pitch: 3.5mm, Color: green, Contact surface



### 15EDGKBM-3.81

Pluggable terminal blocks, Rated current: 7A. Rated voltage (II/2)  
: 250V, pitch: 3.81mm, Color: green, Contact surface



### 15EDGKC-3.5

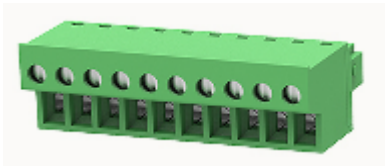
Pluggable terminal blocks, Rated current: 8A. Rated voltage (II/2)  
: 250V, pitch: 3.5mm, Color: green, Contact surface



### 15EDGKC-3.81

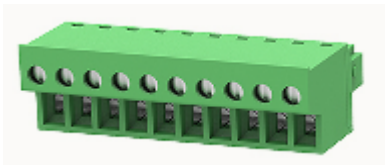


Pluggable terminal blocks, Rated current: 8A. Rated voltage (III/2)  
: 160V, pitch: 3.81mm, Color: green, Contact surface



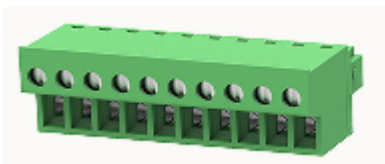
### **15EDGKCM-3.81**

Pluggable terminal blocks, Rated current: 8A. Rated voltage (III/2)  
: 160V, pitch: 3.81mm, Color: green, Contact surface



### **15EDGKM-3.5**

Pluggable terminal blocks, Rated current: 7A. Rated voltage (II/2)  
: 250V, pitch: 3.5mm, Color: green, Contact surface



### **15EDGKM-3.81**

Pluggable terminal blocks, Rated current: 7A. Rated voltage (II/2)  
: 250V, pitch: 3.81mm, Color: green, Contact surface



### **15EDGKM-5.08**

Pluggable terminal blocks, Rated current:7A. Rated voltage (II/2)  
:450V, pitch:5.08mm, Color:green, Contact surface



### **15EDGKR-3.81**

Pluggable terminal blocks, Rated current:7A. Rated voltage (II/2)  
:250V, pitch:3.81mm, Color:green, Contact surface



### **2EDGK-5.0**

Pluggable terminal blocks, Rated current:20A. Rated voltage (III/2)  
:320V, pitch:5.0mm, Color:green, Contact surface



### **2EDGK-5.08**

Pluggable terminal blocks, Rated current:20A. Rated voltage (III/2)  
:320V, pitch:5.08mm, Color:green, Contact surface



### **2EDGK-7.5**

Pluggable terminal blocks, Rated current:20A. Rated voltage (III/2)  
:400V, pitch:7.5mm, Color:green, Contact surface



### **2EDGK-7.62**

Pluggable terminal blocks, Rated current:20A. Rated voltage (III/2)  
:400V, pitch:7.62mm, Color:green, Contact surface



### **2EDGKA-5.0**

Pluggable terminal blocks, Rated current:10A. Rated voltage (III/2)  
:320V, pitch:5.0mm, Color:green, Contact surface



### **2EDGKA-5.08**

Pluggable terminal blocks, Rated current:10A. Rated voltage (III/2)  
:320V, pitch:5.08mm, Color:green, Contact surface



### **2EDGKA-7.62**

Pluggable terminal blocks, Rated current:10A. Rated voltage (III/2)  
:400V, pitch:7.62mm, Color:green, Contact surface



### **2EDGKAM-5.08**

Pluggable terminal blocks, Rated current: 10A. Rated voltage (III/2)  
: 320V, pitch: 5.08mm, Color: green, Contact surface



### **2EDGKAM-7.5**

Pluggable terminal blocks, Rated current: 10A. Rated voltage (III/2)  
: 400V, pitch: 7.5mm, Color: green, Contact surface



### **2EDGKAM-7.62**

Pluggable terminal blocks, Rated current: 10A. Rated voltage (III/2)  
: 400V, pitch: 7.62mm, Color: green, Contact surface



### **2EDGKB-5.0**

**Pluggable terminal blocks, Rated current: 10A. Rated voltage (III/2)  
: 320V, pitch: 5.0mm, Color: green, Contact surface**



### **2EDGKB-5.08**

**Pluggable terminal blocks, Rated current: 10A. Rated voltage (III/2)  
: 320V, pitch: 5.08mm, Color: green, Contact surface**



### **2EDGKB-7.62**

**Pluggable terminal blocks, Rated current: 10A. Rated voltage (III/2)  
: 400V, pitch: 7.62mm, Color: green, Contact surface**



### **2EDGKBM-5.08**

**Pluggable terminal blocks, Rated current: 10A. Rated voltage (III/2)  
: 320V, pitch: 5.08mm, Color: green, Contact surface**



### **2EDGKC-5.0**

Pluggable terminal blocks, Rated current: 20A. Rated voltage (III/2)  
: 320V, pitch: 5.0mm, Color: green, Contact surface



### **2EDGKC-5.08**

Pluggable terminal blocks, Rated current: 20A. Rated voltage (III/2)  
: 320V, pitch: 5.08mm, Color: green, Contact surface



### **2EDGKC-7.62**

Pluggable terminal blocks, Rated current: 20A. Rated voltage (III/2)  
: 400V, pitch: 7.62mm, Color: green, Contact surface



### **2EDGKCM-5.0**

**Pluggable terminal blocks,Rated current:20A.Rated voltage (III/2)  
:320V,pitch:5.0mm,Color:green,Contact surface**



### **2EDGKCM-5.08**

**Pluggable terminal blocks,Rated current:20A.Rated voltage (III/2)  
:320V,pitch:5.08mm,Color:green,Contact surface**



### **2EDGKCM-7.62**

**Pluggable terminal blocks,Rated current:20A.Rated voltage (III/2)  
:400V,pitch:7.62mm,Color:green,Contact surface**



### **2EDGKE-5.0**

**Pluggable terminal blocks,Rated current:20A.Rated voltage (III/2)  
:320V,pitch:5.0mm,Color:green,Contact surface**





### **2EDGKE-5.08**

**Pluggable terminal blocks, Rated current:20A. Rated voltage (III/2)  
:320V, pitch:5.08mm, Color:green, Contact surface**



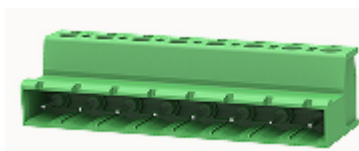
### **2EDGKF-5.0**

Pluggable terminal blocks, Rated current:20A. Rated voltage (III/2)  
:320V, pitch:5.0mm, Color:green, Contact surface



### **2EDGKF-5.08**

Pluggable terminal blocks, Rated current:20A. Rated voltage (III/2)  
:320V, pitch:5.08mm, Color:green, Contact surface



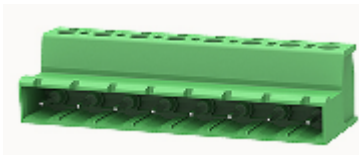
### **2EDGKFM-5.08**

Pluggable terminal blocks, Rated current:20A. Rated voltage (III/2)  
:320V, pitch:5.08mm, Color:green, Contact surface



### **2EDGKH-5.08**

Pluggable terminal blocks, Rated current: 15A. Rated voltage (III/2)  
: 250V, pitch: 5.08mm, Color: green, Contact surface



### **2EDGKL-5.08**

Pluggable terminal blocks, Rated current: 20A. Rated voltage (III/2)  
: 320V, pitch: 5.08mm, Color: green, Contact surface



### **2EDGKM-5.0**

Pluggable terminal blocks, Rated current: 20A. Rated voltage (III/2)  
: 320V, pitch: 5.0mm, Color: green, Contact surface



### **2EDGKM-5.08**

Pluggable terminal blocks, Rated current: 20A. Rated voltage (III/2)  
: 320V, pitch: 5.08mm, Color: green, Contact surface



### **2EDGKM-7.62**

Pluggable terminal blocks, Rated current: 20A. Rated voltage (III/2)  
: 400V, pitch: 7.62mm, Color: green, Contact surface



### **2EDGKR-5.0**

Pluggable terminal blocks, Rated current: 20A. Rated voltage (III/2)  
: 320V, pitch: 5.0mm, Color: green, Contact surface



### **2EDGKR-5.08**

Pluggable terminal blocks, Rated current: 20A. Rated voltage (III/2)  
: 320V, pitch: 5.08mm, Color: green, Contact surface



### **2EDGKR-7.62**

Pluggable terminal blocks, Rated current: 20A. Rated voltage (III/2)  
: 400V, pitch: 7.62mm, Color: green, Contact surface



### **2EDGKRM-5.08**

Pluggable terminal blocks, Rated current: 20A. Rated voltage (III/2)  
: 250V, pitch: 5.08mm, Color: green, Contact surface



### **2EDGKLM-5.08**

Pluggable terminal blocks, Rated current: 12A. Rated voltage (III/2)  
: 250V, pitch: 5.08mm, Color: green, Contact surface



### **2EDGKRP-7.62**

Pluggable terminal blocks, Rated current: 20A. Rated voltage (III/2)  
: 400V, pitch: 7.62mm, Color: green, Contact surface



### **5EDGKHM-7.62**

Pluggable terminal blocks, Rated current: 41A. Rated voltage (III/2)  
: 1000V, pitch: 7.62mm, Color: green, Contact surface



### **2EDGKDWM-5.08**

Pluggable terminal blocks, Rated current: 20A. Rated voltage (III/2)  
: 320V, pitch: 5.08mm, Color: green, Contact surface



### **2EDGKM-7.5**

Pluggable terminal blocks, Rated current: 20A. Rated voltage (III/2)  
: 400V, pitch: 7.5mm, Color: green, Contact surface



### **2EDGKHV-7.62**

Pluggable terminal blocks, Rated current: 16A. Rated voltage (III/2)  
: 1000V, pitch: 7.62mm, Color: green, Contact surface



### **2EDGKHM-5.08**

Pluggable terminal blocks, Rated current: 15A. Rated voltage (Ⅲ/2)  
: 250V, pitch: 5.08mm, Color: green, Contact surface



### **15EDGA-3.5**

Pluggable terminal blocks, Rated current: 7A. Rated voltage (Ⅲ/2)  
: 250V, pitch: 3.5mm, Color: green, Contact surface



### **15EDGA-3.81**

Pluggable terminal blocks, Rated current: 7A. Rated voltage (Ⅲ/2)  
: 250V, pitch: 3.81mm, Color: green, Contact surface



### 15EDGB-3.5

Pluggable terminal blocks, Rated current: 7A. Rated voltage (Ⅲ/2) : 250V, pitch: 3.5mm, Color: green, Contact surface



### 15EDGB-3.81

Pluggable terminal blocks, Rated current: 7A. Rated voltage (Ⅲ/2) : 250V, pitch: 3.81mm, Color: green, Contact surface



### 15EDGKD-2.5

Pluggable terminal blocks, Rated current: 5A. Rated voltage (Ⅱ/2) : 250V, Cross section: 0.5mm<sup>2</sup>, pitch: 2.5mm, Color: green, Contact surface



### 15EDGKD-3.5

Pluggable terminal blocks, Rated current: 12A. Rated voltage (Ⅲ/2) : 250V, Cross section: 1.5mm<sup>2</sup>, pitch: 3.5mm, Color: green, Contact surface



### **15EDGKD-3.81**

Pluggable terminal blocks, Rated current:12A. Rated voltage (Ⅲ/2) :250V, Cross section:1.5mm<sup>2</sup>, pitch:3.81mm, Color:green, Contact surface



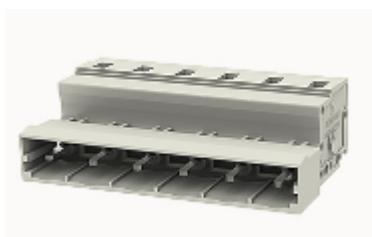
### **15EDGKDM-3.5**

Pluggable terminal blocks, Rated current:12A. Rated voltage (Ⅲ/2) :250V, Cross section:1.5mm<sup>2</sup>, pitch:3.5mm, Color:green, Contact surface



### **15EDGKDM-3.81**

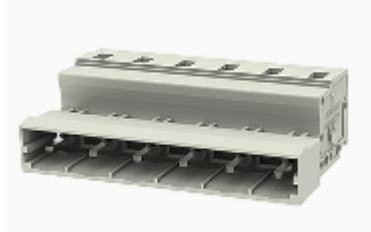
Pluggable terminal blocks, Rated current:12A. Rated voltage (Ⅲ/2) :250V, Cross section:1.5mm<sup>2</sup>, pitch:3.81mm, Color:green, Contact surface





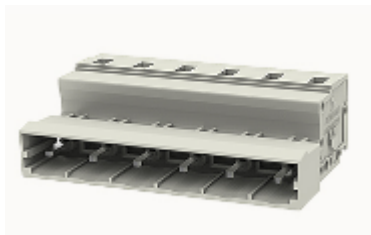
### **15EDGKN-3.5**

Pluggable terminal blocks, Rated current:8A. Rated voltage (Ⅲ/2) :250V, Cross section:1.0mm<sup>2</sup>, pitch:3.5mm, Color:green, Contact surface



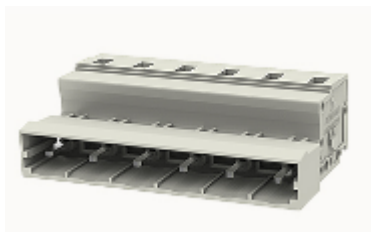
### **15EDGKN-3.81**

Pluggable terminal blocks, Rated current:8A. Rated voltage (Ⅲ/2) :250V, Cross section:1.0mm<sup>2</sup>, pitch:3.81mm, Color:green, Contact surface



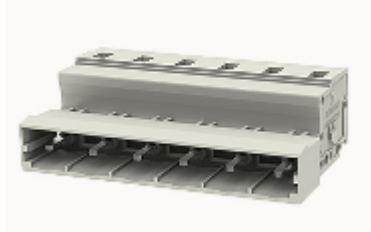
### **15EDGKNG-3.5**

Pluggable terminal blocks, Rated current:8A. Rated voltage (Ⅲ/2) :250V, Cross section:1.0mm<sup>2</sup>, pitch:3.5mm, Color:green, Contact surface



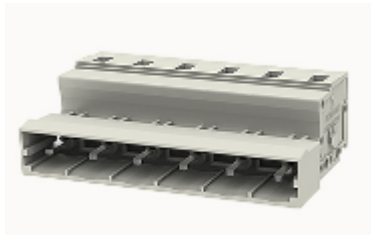
### **15EDGKNGB-3.81**

Pluggable terminal blocks, Rated current: 8A. Rated voltage (Ⅲ/2) : 250V, Cross section: 1.0mm<sup>2</sup>, pitch: 3.81mm, Color: green, Contact surface



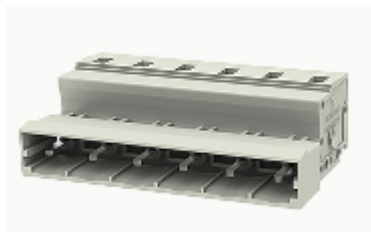
### **2EDGA-5.08**

Pluggable terminal blocks, Rated current: 20A. Rated voltage (Ⅲ/2) : 320V, pitch: 5.08mm, Color: green, Contact surface



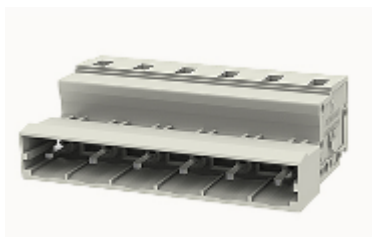
### **2EDGA-7.62**

Pluggable terminal blocks, Rated current: 20A. Rated voltage (Ⅲ/2) : 400V, pitch: 7.62mm, Color: green, Contact surface



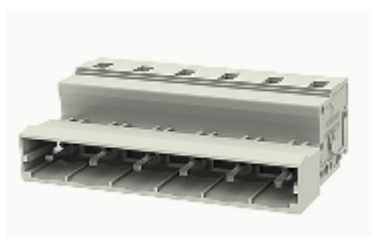
### **2EDGAM-5.08**

Pluggable terminal blocks, Rated current: 20A. Rated voltage (Ⅲ/2) : 320V, pitch: 5.08mm, Color: green, Contact surface



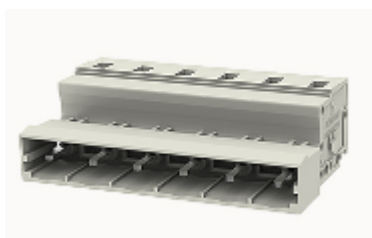
### **2EDGB-5.08**

Pluggable terminal blocks, Rated current:20A. Rated voltage (Ⅲ/2)  
:320V, pitch:5.08mm, Color:green, Contact surface



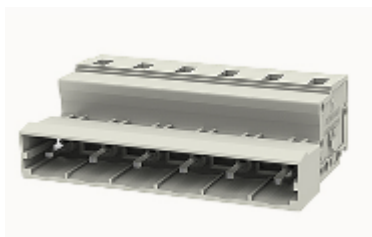
### **2EDGB-7.62**

Pluggable terminal blocks, Rated current:20A. Rated voltage (Ⅲ/2)  
:400V, pitch:7.62mm, Color:green, Contact surface



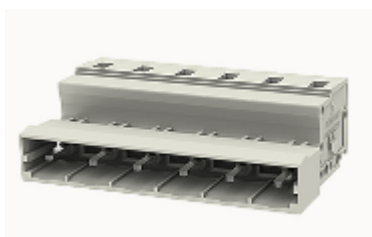
### **2EDGKD-5.0**

Pluggable terminal blocks, Rated current:20A. Rated voltage (Ⅲ/2)  
:320V, pitch:5.0mm, Color:green, Contact surface



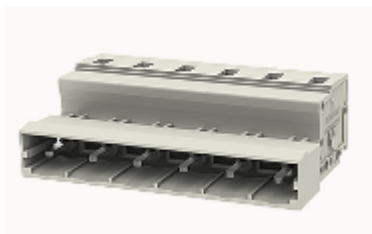
### **2EDGKD-5.08**

Pluggable terminal blocks, Rated current:20A. Rated voltage (Ⅲ/2)  
:320V, pitch:5.08mm, Color:green, Contact surface



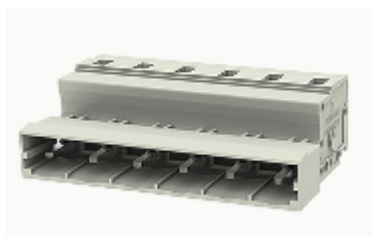
### **2EDGKD-7.62**

Pluggable terminal blocks, Rated current:20A. Rated voltage (Ⅲ/2)  
:400V, pitch:7.62mm, Color:green, Contact surface



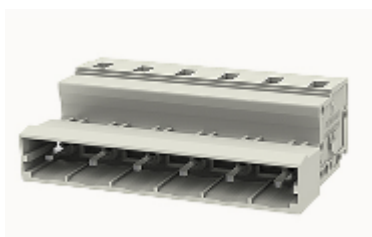
### **2EDGKDA-5.0**

Pluggable terminal blocks, Rated current:20A. Rated voltage (Ⅲ/2)  
:320V, pitch:5.0mm, Color:green, Contact surface



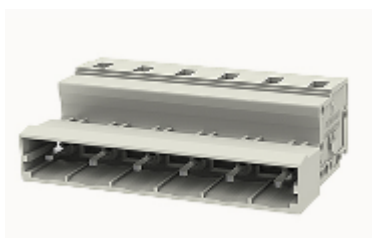
### **2EDGKDA-5.08**

Pluggable terminal blocks, Rated current:20A. Rated voltage (Ⅲ/2)  
:320V, pitch:5.08mm, Color:green, Contact surface



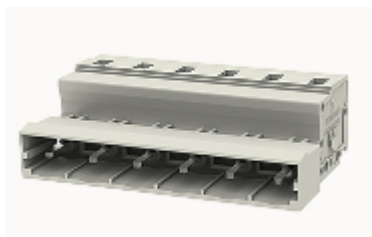
### **2EDGKDAM-5.0**

Pluggable terminal blocks, Rated current:20A. Rated voltage (Ⅲ/2)  
:320V, pitch:5.0mm, Color:green, Contact surface



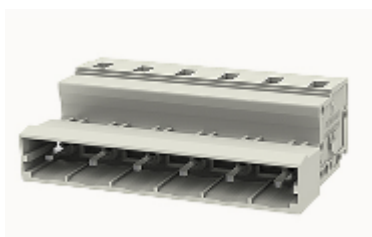
### **2EDGKDAM-5.08**

Pluggable terminal blocks, Rated current:20A. Rated voltage (Ⅲ/2)  
:320V, pitch:5.08mm, Color:green, Contact surface



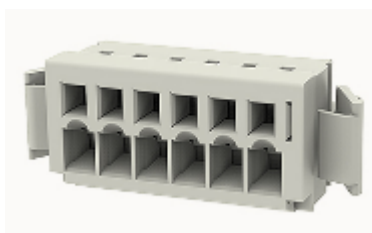
### **2EDGKDB-5.0**

Pluggable terminal blocks, Rated current:20A. Rated voltage (Ⅲ/2)  
:320V, pitch:5.0mm, Color:green, Contact surface



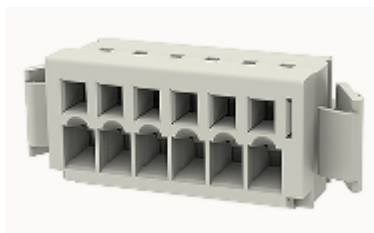
### **2EDGKDB-5.08**

Pluggable terminal blocks, Rated current:20A. Rated voltage (Ⅲ/2)  
:320V, pitch:5.08mm, Color:green, Contact surface



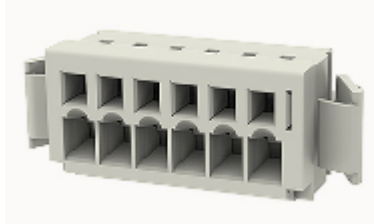
### **2EDGKDBM-5.0**

Pluggable terminal blocks, Rated current:20A. Rated voltage (Ⅲ/2)  
:320V, pitch:5.0mm, Color:green, Contact surface



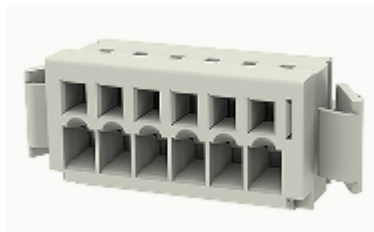
### **2EDGKDBM-5.08**

Pluggable terminal blocks, Rated current: 20A. Rated voltage (Ⅲ/2)  
: 320V, pitch: 5.08mm, Color: green, Contact surface



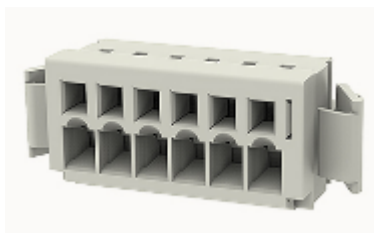
### **2EDGKDF-5.0**

Pluggable terminal blocks, Rated current: 20A. Rated voltage (Ⅲ/2)  
: 320V, pitch: 5.0mm, Color: green, Contact surface



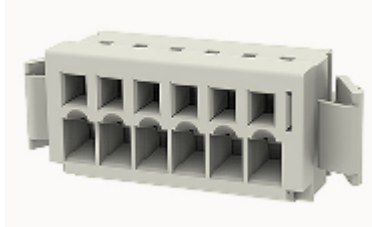
### **2EDGKDF-5.08**

Pluggable terminal blocks, Rated current: 20A. Rated voltage (Ⅲ/2)  
: 320V, pitch: 5.08mm, Color: green, Contact surface



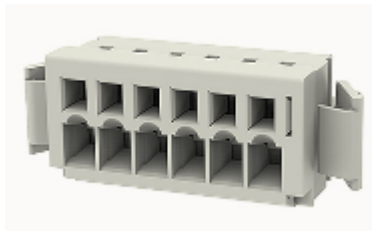
### **2EDGKDFM-5.0**

Pluggable terminal blocks, Rated current:20A. Rated voltage (Ⅲ/2)  
:320V, pitch:5.0mm, Color:green, Contact surface



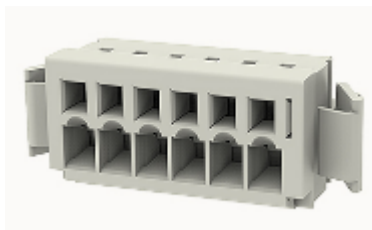
### **2EDGKDFM-5.08**

Pluggable terminal blocks, Rated current:20A. Rated voltage (Ⅲ/2)  
:320V, pitch:5.08mm, Color:green, Contact surface



### **2EDGKDH-5.08**

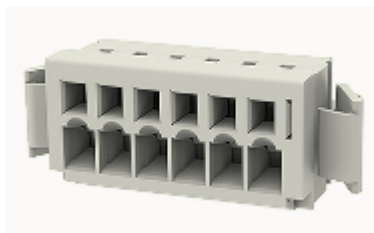
Pluggable terminal blocks, Rated current:20A. Rated voltage (Ⅲ/2)  
:320V, pitch:5.08mm, Color:green, Contact surface



### **2EDGKDHM-5.08**

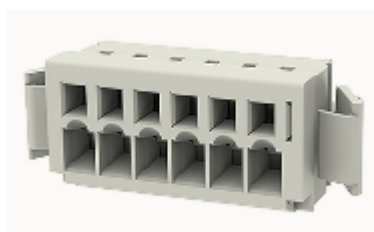
Pluggable terminal blocks, Rated current:20A. Rated voltage (Ⅲ/2)  
:320V, pitch:5.08mm, Color:green, Contact surface





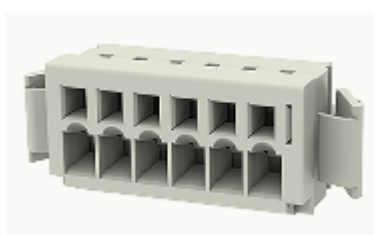
### **2EDGKDM-5.0**

Pluggable terminal blocks, Rated current: 20A. Rated voltage (Ⅲ/2)  
: 320V, pitch: 5.0mm, Color: green, Contact surface



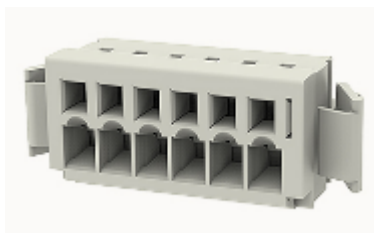
### **2EDGKDM-5.08**

Pluggable terminal blocks, Rated current: 20A. Rated voltage (Ⅲ/2)  
: 320V, pitch: 5.08mm, Color: green, Contact surface



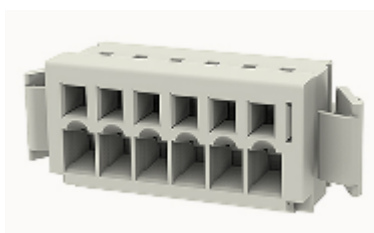
### **2EDGKDM-7.62**

Pluggable terminal blocks, Rated current: 20A. Rated voltage (Ⅲ/2)  
: 400V, pitch: 7.62mm, Color: green, Contact surface



### **2EDGKDR-5.08**

Pluggable terminal blocks, Rated current: 20A. Rated voltage (Ⅲ/2)  
: 320V, pitch: 5.08mm, Color: green, Contact surface



### **2EDGKDRP-5.08**

Pluggable terminal blocks, Rated current: 20A. Rated voltage (Ⅲ/2)  
: 320V, pitch: 5.08mm, Color: green, Contact surface



### **5EDGKD-7.62**

Pluggable terminal blocks, Rated current: 41A. Rated voltage (Ⅲ/2)  
: 1000V, pitch: 7.62mm, Color: green, Contact surface



### **8EDGK-2.5**

Pluggable terminal blocks, Rated current: 6A. Rated voltage (III/3)  
: 130V, pitch: 2.5mm, Color: gray, Contact surface



### **8EDGK-3.5**

Pluggable terminal blocks, Rated current: 10A. Rated voltage (III/3)  
: 130V, pitch: 3.5mm, Color: gray, Contact surface



### **8EDGK-3.81**

Pluggable terminal blocks, Rated current: 10A. Rated voltage (III/3)  
: 130V, pitch: 3.81mm, Color: gray, Contact surface



### **8EDGK-5.0**

Pluggable terminal blocks, Rated current: 20A. Rated voltage (III/3)  
: 320V, pitch: 5.0mm, Color: gray, Contact surface



### **8EDGK-5.08**

Pluggable terminal blocks, Rated current:20A. Rated voltage (III/3)  
:320V, pitch:5.08mm, Color:gray, Contact surface



### **8EDGK-7.5**

Pluggable terminal blocks, Rated current:20A. Rated voltage (III/3)  
:400V, pitch:7.5mm, Color:gray, Contact surface



### **8EDGK-7.62**

Pluggable terminal blocks, Rated current:20A. Rated voltage (III/3)  
:400V, pitch:7.62mm, Color:gray, Contact surface



### **8EDGKB-5.0**

Pluggable terminal blocks, Rated current:20A. Rated voltage (III/3)  
:320V, pitch:5.0mm, Color:gray, Contact surface



### **8EDGKB-7.5**

Pluggable terminal blocks, Rated current: 20A. Rated voltage (III/3)  
: 400V, pitch: 7.5mm, Color: gray, Contact surface



### **8EDGKG-3.5**

Pluggable terminal blocks, Rated current: 10A. Rated voltage (III/3)  
: 130V, pitch: 3.5mm, Color: gray, Contact surface



### **8EDGKG-5.08**

Pluggable terminal blocks, Rated current: 20A. Rated voltage (III/3)  
: 320V, pitch: 5.08mm, Color: gray, Contact surface



### **8EDGKG-7.5**

Pluggable terminal blocks, Rated current: 20A. Rated voltage (III/3)  
: 400V, pitch: 7.5mm, Color: gray, Contact surface



### **8EDGKG-7.62**

Pluggable terminal blocks, Rated current:20A. Rated voltage (III/3)  
:400V, pitch:7.62mm, Color:gray, Contact surface



### **8EDGKGB-7.5**

Pluggable terminal blocks, Rated current:20A. Rated voltage (III/3)  
:400V, pitch:7.5mm, Color:gray, Contact surface



### **8EDGKMB-5.0**

Pluggable terminal blocks, Rated current:20A. Rated voltage (III/3)  
:320V, pitch:5.0mm, Color:gray, Contact surface



### **8EDGKR-2.5**

Pluggable terminal blocks, Rated current: 6A. Rated voltage (III/3)  
: 130V, pitch: 2.5mm, Color: gray, Contact surface



### **8EDGKR-3.5**

Pluggable terminal blocks, Rated current: 10A. Rated voltage (III/2)  
: 150V, pitch: 3.5mm, Color: gray, Contact surface



### **8EDGKR-5.0**

Pluggable terminal blocks, Rated current: 20A. Rated voltage (III/2)  
: 320V, pitch: 5.0mm, Color: gray, Contact surface



### **8EDGKR-5.08**

Pluggable terminal blocks, Rated current: 20A. Rated voltage (III/2)  
: 320V, pitch: 5.08mm, Color: gray, Contact surface



### **8EDGKR-7.5**

Pluggable terminal blocks, Rated current:20A. Rated voltage (III/2)  
:400V, pitch:7.5mm, Color:gray, Contact surface



### **8EDGKRC-5.0**

Pluggable terminal blocks, Rated current:20A. Rated voltage (III/2)  
:320V, pitch:5.0mm, Color:gray, Contact surface



### **8EDGKRMA-5.0**

Pluggable terminal blocks, Rated current:20A. Rated voltage (III/2)  
:320V, pitch:5.0mm, Color:gray, Contact surface



### **8EDGKRMA-5.08**

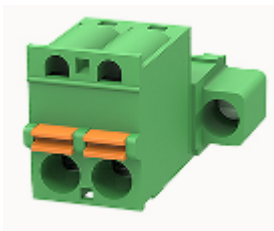


Pluggable terminal blocks, Rated current:20A. Rated voltage (III/2)  
:320V, pitch:5.08mm, Color:gray, Contact surface



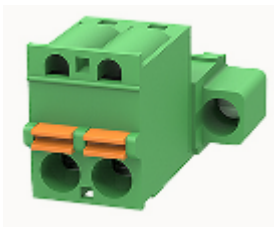
### **8EDGKRMB-5.0**

Pluggable terminal blocks, Rated current:20A. Rated voltage (III/2)  
:320V, pitch:5.0mm, Color:gray, Contact surface



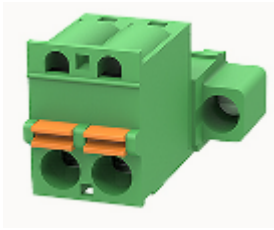
### **9EDGK-7.5**

Pluggable terminal blocks, Rated current:20A. Rated voltage (III/2)  
:630V, pitch:7.5mm, Color:black, Contact surface



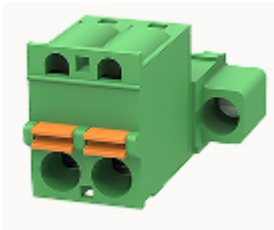
### **9EDGKH-7.5**

Pluggable terminal blocks, Rated current:20A. Rated voltage (III/2)  
:1000V, pitch:7.5mm, Color:black, Contact surface



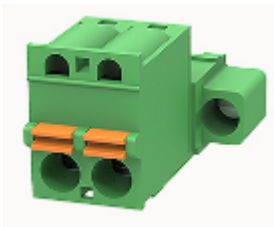
### **2EDGB-5.0**

Pluggable terminal blocks, Rated current: 20A. Rated voltage (Ⅲ/2)  
: 320V, pitch: 5.0mm, Color: green, Contact surface



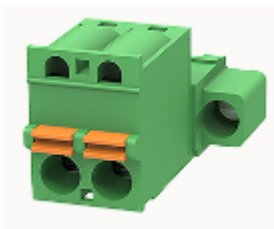
### **8EDGKGB-5.0**

Pluggable terminal blocks, Rated current: 20A. Rated voltage (Ⅲ/3)  
: 320V, pitch: 5.0mm, Color: gray, Contact surface



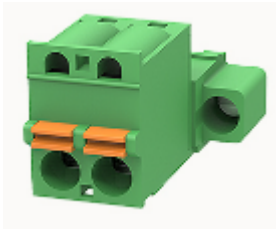
### **8EDGKRB-5.0**

Pluggable terminal blocks, Rated current: 20A. Rated voltage (Ⅲ/2)  
: 320V, pitch: 5.0mm, Color: gray, Contact surface



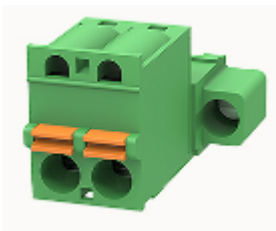
### **15EDGKNHB-3.5**

Pluggable terminal blocks, Rated current:13.5A. Rated voltage (Ⅲ/2) :160V, Cross section:1.5mm<sup>2</sup>, pitch:3.5mm, Color:green, Contact surface



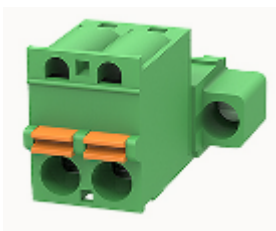
### **15EDGKNHBG-3.5**

Pluggable terminal blocks, Rated current:13.5A. Rated voltage (Ⅲ/2) :160V, Cross section:1.5mm<sup>2</sup>, pitch:3.5mm, Color:green, Contact surface



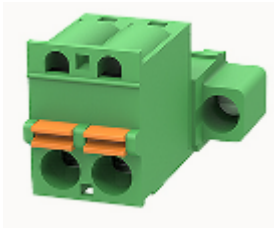
### **2EDGAM-7.62**

Pluggable terminal blocks, Rated current:20A. Rated voltage (Ⅲ/2) :400V, pitch:7.62mm, Color:green, Contact surface



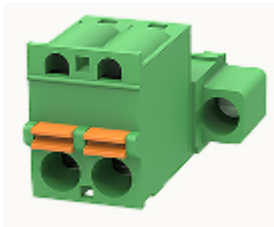
### **2EDGBM-5.08**

Pluggable terminal blocks, Rated current:20A. Rated voltage (Ⅲ/2) :320V, pitch:5.08mm, Color:green, Contact surface



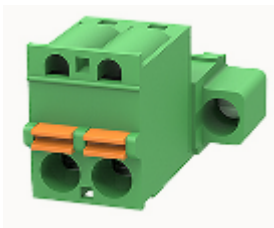
### **2EDGKDRM-5.08**

Pluggable terminal blocks, Rated current: 20A. Rated voltage (Ⅲ/2)  
: 320V, pitch: 5.08mm, Color: green, Contact surface



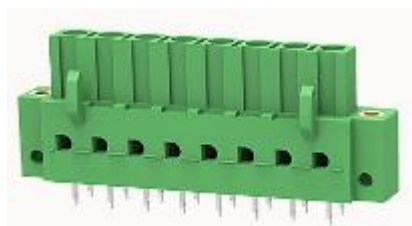
### **8EDGKMA-7.62**

Pluggable terminal blocks, Rated current: 20A. Rated voltage (Ⅲ/3)  
: 400V, pitch: 7.62mm, Color: gray, Contact surface



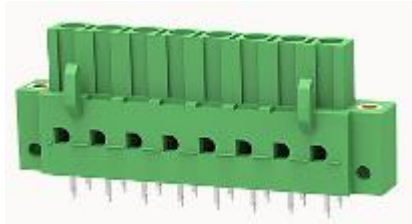
### **8EDGKMB-7.5**

Pluggable terminal blocks, Rated current: 20A. Rated voltage (Ⅲ/3)  
: 400V, pitch: 7.5mm, Color: gray, Contact surface



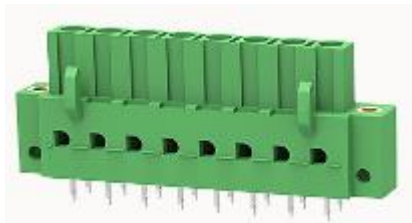
### **8EDGKRM-3.5**

Pluggable terminal blocks, Rated current:10A. Rated voltage (III/3)  
:130V, pitch:3.5mm, Color:gray, Contact surface



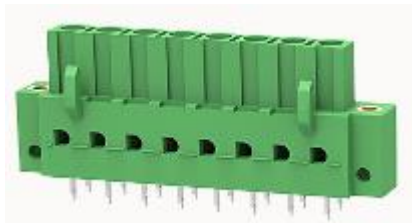
### **8EDGKRMA-7.62**

Pluggable terminal blocks, Rated current:20A. Rated voltage (III/2)  
:400V, pitch:7.62mm, Color:gray, Contact surface



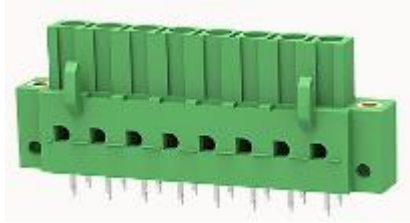
### **8EDGKRMB-5.08**

Pluggable terminal blocks, Rated current:20A. Rated voltage (III/2)  
:320V, pitch:5.08mm, Color:gray, Contact surface



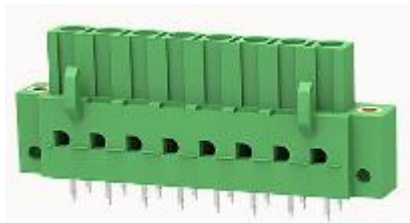
### **15EDGKNHBM-3.5**

Pluggable terminal blocks, Rated current:13.5A. Rated voltage (Ⅲ/2) :160V, Cross section:1.5mm<sup>2</sup>, pitch:3.5mm, Color:green, Contact surface



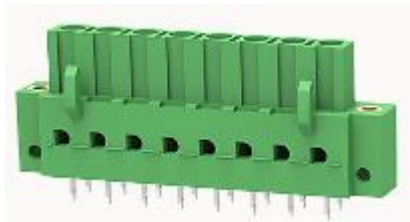
### **15EDGKNM-3.5**

Pluggable terminal blocks, Rated current:8A. Rated voltage (Ⅲ/2) :250V, Cross section:1.0mm<sup>2</sup>, pitch:3.5mm, Color:green, Contact surface



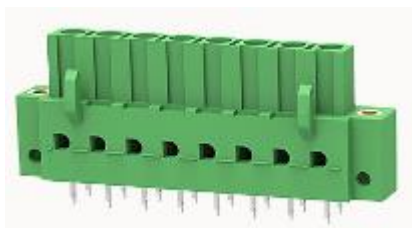
### **15EDGKNM-3.81**

Pluggable terminal blocks, Rated current:8A. Rated voltage (Ⅲ/2) :250V, Cross section:1.0mm<sup>2</sup>, pitch:3.81mm, Color:green, Contact surface



### **2EDGKD-7.5**

Pluggable terminal blocks, Rated current:20A. Rated voltage (Ⅲ/2) :400V, pitch:7.5mm, Color:green, Contact surface



### **2EDGKDW-5.0**

Pluggable terminal blocks, Rated current: 20A. Rated voltage (Ⅲ/2)  
: 320V, pitch: 5.0mm, Color: green, Contact surface



### **2EDGKDW-5.08**

Pluggable terminal blocks, Rated current: 20A. Rated voltage (Ⅲ/2)  
: 320V, pitch: 5.08mm, Color: green, Contact surface



### **8EDGKB-5.08**

Pluggable terminal blocks, Rated current: 20A. Rated voltage (Ⅲ/3)  
: 320V, pitch: 5.08mm, Color: gray, Contact surface



### **8EDGKC-5.0**

Pluggable terminal blocks, Rated current:20A. Rated voltage (III/3)  
:320V, pitch:5.0mm, Color:gray, Contact surface



### **8EDGKC-7.5**

Pluggable terminal blocks, Rated current:20A. Rated voltage (III/3)  
:400V, pitch:7.5mm, Color:gray, Contact surface



### **8EDGKE-3.81**

Pluggable terminal blocks, Rated current:10A. Rated voltage (III/3)  
:130V, pitch:3.81mm, Color:gray, Contact surface





### **8EDGKF-5.0**

Pluggable terminal blocks, Rated current:20A. Rated voltage (III/3)  
:320V, pitch:5.0mm, Color:gray, Contact surface



### **8EDGKG-3.81**

Pluggable terminal blocks, Rated current:10A. Rated voltage (III/3)  
:130V, pitch:3.81mm, Color:gray, Contact surface



### **8EDGKG-5.0**

Pluggable terminal blocks, Rated current:20A. Rated voltage (III/3)  
:320V, pitch:5.0mm, Color:gray, Contact surface



### **8EDGKGB-5.08**

Pluggable terminal blocks, Rated current:20A. Rated voltage (III/3)  
:320V, pitch:5.08mm, Color:gray, Contact surface



### **8EDGKMA-5.0**

Pluggable terminal blocks, Rated current:20A. Rated voltage (III/3)  
:320V, pitch:5.0mm, Color:gray, Contact surface



### **8EDGKMA-5.08**

Pluggable terminal blocks, Rated current:20A. Rated voltage (III/3)  
:320V, pitch:5.08mm, Color:gray, Contact surface



### **8EDGKMA-7.5**

Pluggable terminal blocks, Rated current: 20A. Rated voltage (III/3)  
: 400V, pitch: 7.5mm, Color: gray, Contact surface



### **8EDGKMB-5.08**

Pluggable terminal blocks, Rated current: 20A. Rated voltage (III/3)  
: 320V, pitch: 5.08mm, Color: gray, Contact surface



### **8EDGKRB-5.08**

Pluggable terminal blocks, Rated current: 20A. Rated voltage (III/2)  
: 320V, pitch: 5.08mm, Color: gray, Contact surface



### **8EDGKRB-7.5**

Pluggable terminal blocks, Rated current: 20A. Rated voltage (III/3)  
: 400V, pitch: 7.5mm, Color: gray, Contact surface



### **8EDGKRC-7.5**

Pluggable terminal blocks, Rated current: 20A. Rated voltage (III/3)  
: 400V, pitch: 7.5mm, Color: gray, Contact surface



### **8EDGKRMA-7.5**

Pluggable terminal blocks, Rated current: 20A. Rated voltage (III/2)  
: 400V, pitch: 7.5mm, Color: gray, Contact surface



### **2EDGKDHG-5.08**

Pluggable terminal blocks, Rated current: 20A. Rated voltage (III/2)  
: 320V, pitch: 5.08mm, Color: green, Contact surface



### **2EDGKDRN-5.08**

Pluggable terminal blocks, Rated current: 20A. Rated voltage (Ⅲ/2)  
: 320V, pitch: 5.08mm, Color: green, Contact surface



### **2EDGKDRW-5.08**

Pluggable terminal blocks, Rated current: 20A. Rated voltage (Ⅲ/2)  
: 320V, pitch: 5.08mm, Color: green, Contact surface



### **15EDGKRP-3.81**

Pluggable terminal blocks, Rated current: 7A. Rated voltage (Ⅱ/2)  
: 250V, pitch: 3.81mm, Color: green, Contact surface



### **15EDGKNHC-3.5**

Pluggable terminal blocks, Rated current:13.5A. Rated voltage (Ⅲ/2) :160V, Cross section:1.5mm<sup>2</sup>, pitch:3.5mm, Color:green, Contact surface



### **8EDGKD-5.0**

Pluggable terminal blocks, Rated current:20A. Rated voltage (Ⅲ/3) :320V, pitch:5.0mm, Color:gray, Contact surface



### **8EDGKRMB-7.5**

Pluggable terminal blocks, Rated current:20A. Rated voltage (Ⅲ/2) :400V, pitch:7.5mm, Color:gray, Contact surface



### **2EDGKDM-7.5**

Pluggable terminal blocks, Rated current:20A. Rated voltage (Ⅲ/2) :400V, pitch:7.5mm, Color:green, Contact surface



## **2EDGBM-7.62**

Pluggable terminal blocks, Rated current: 20A. Rated voltage (Ⅲ/2) : 400V, pitch: 7.62mm, Color: green, Contact surface



## **15EDGKNG-3.81**

Pluggable terminal blocks, Rated current: 8A. Rated voltage (Ⅲ/2) : 250V, Cross section: 1.0mm<sup>2</sup>, pitch: 3.81mm, Color: green, Contact surface



## **5EDGKDM-7.62**

Pluggable terminal blocks, Rated current: 41A. Rated voltage (Ⅲ/2) : 1000V, pitch: 7.62mm, Color: green, Contact surface



## **8EDGKC-7.62**

Pluggable terminal blocks, Rated current: 20A. Rated voltage (Ⅲ/3) : 400V, pitch: 7.62mm, Color: gray, Contact surface



### **8EDGKR-7.62**

Pluggable terminal blocks, Rated current: 20A. Rated voltage (III/2)  
: 400V, pitch: 7.62mm, Color: gray, Contact surface



### **8EDGKRC-5.08**

Pluggable terminal blocks, Rated current: 20A. Rated voltage (III/2)  
: 320V, pitch: 5.08mm, Color: gray, Contact surface



### **8EDGKRD-7.5**

Pluggable terminal blocks, Rated current: 20A. Rated voltage (III/3)  
: 400V, pitch: 7.5mm, Color: gray, Contact surface



### **8EDGKRD-5.0**

Pluggable terminal blocks, Rated current: 20A. Rated voltage (III/2)  
: 320V, pitch: 5.0mm, Color: gray, Contact surface



### **9EDGK-5.0**

Pluggable terminal blocks, Rated current: 20A. Rated voltage (III/2)  
: 160V, pitch: 5.0mm, Color: black, Contact surface





## PCB Socket

Mating with PCB plugs, as the welding board part, supporting various common welding methods



## 9EDGRC-7.5

Pluggable terminal blocks, Rated current: 20A. Rated voltage (III/2)  
: 630V, pitch: 7.5mm, Color: black, Contact surface : Gold



## 15EDGRHCM-6.35

Pluggable terminal blocks, Rated current:6A. Rated voltage (III/2) :400V, pitch:6.35mm, Color:grey, Contact surface



## 9EDGRC-5.0

Plug in connector, nominal current: 16A. Rated voltage (III/2): 250V, pin spacing : 5.0mm, color: black, contact surface: gold



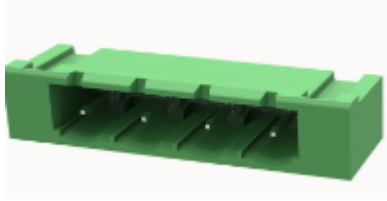
## 2EDGVHC-5.08

Pluggable terminal blocks, Rated current:8A. Rated voltage(III/2) :400V, Pitch:5.08mm, Color:green, Contact surface



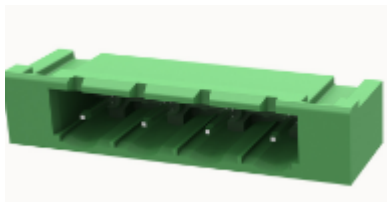
## 2EDGVHCM-5.08

Pluggable terminal blocks, Rated current:8A. Rated voltage(III/2) :400V, Pitch:5.08mm, Color:green, Contact surface



### **2EDGRMG-7.62**

Pluggable terminal blocks, Rated current:20A. Rated voltage(III/2) :400V, Pitch:7.62mm,  
Color:green, Contact surface



### **2EDGRHB-THR-5.0**

Pluggable terminal blocks, Rated current:12A. Rated voltage (III/2)  
:320V, pitch:5.0mm, Color:black, Contact surface



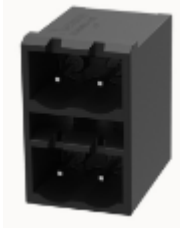
### **2EDGRHB-THR-5.08**

Pluggable terminal blocks, Rated current:12A. Rated voltage (III/2)  
:320V, pitch:5.08mm, Color:black, Contact surface



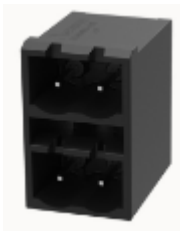
## 2EDGRHBM-THR-5.0

Pluggable terminal blocks, Rated current:12A. Rated voltage (III/2)  
:320V, pitch:5.0mm, Color:black, Contact surface



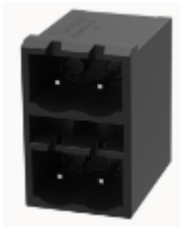
## 2EDGRHBM-THR-5.08

Pluggable terminal blocks, Rated current:12A. Rated voltage (III/2)  
:320V, pitch:5.08mm, Color:black, Contact surface



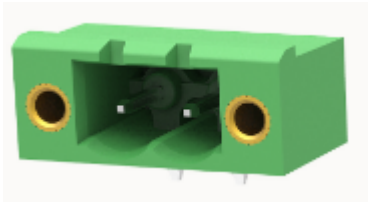
## 15EDGVHC-THR-3.5

Pluggable terminal blocks, Rated current:9.5A. Rated voltage(III/2) :200V, Pitch:3.5mm,  
Color:black, Contact surface



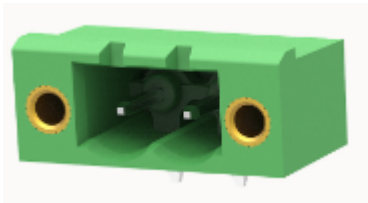
## 15EDGVHCM-THR-3.5

Pluggable terminal blocks, Rated current:9.5A. Rated voltage(III/2) :200V, Pitch:3.5mm,  
Color:black, Contact surface



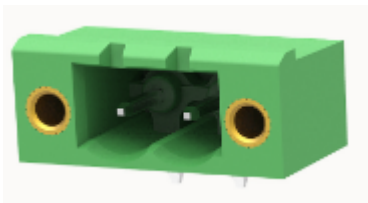
### **15EDGRHC-THR-3.5**

Pluggable terminal blocks, Rated current:9.5A. Rated voltage(III/2) :200V, Pitch:3.5mm,  
Color:black, Contact surface



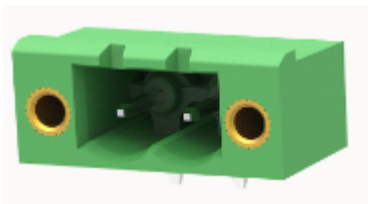
### **15EDGRHCM-THR-3.5**

Pluggable terminal blocks, Rated current:9.5A. Rated voltage(III/2) :200V, Pitch:3.5mm,  
Color:black, Contact surface



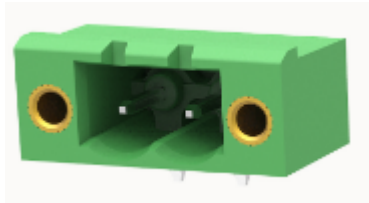
### **2EDGRM-5.08**

Pluggable terminal blocks, Rated current:20A. Rated voltage(III/2) :320V, Pitch:5.08mm,  
Color:green, Contact surface



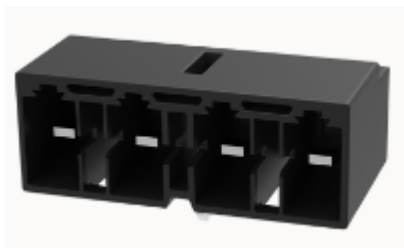
### **2EDGA-HV-7.62**

Pluggable terminal blocks, Rated current:16A. Rated voltage(III/2) :630V, Pitch:7.62mm,  
Color:Green, Contact surface



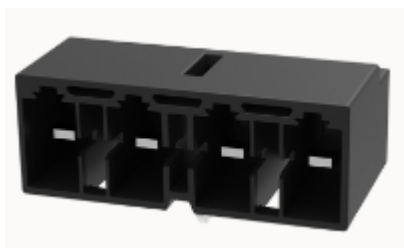
### **2EDGRHCM-5.08**

Pluggable terminal blocks, Rated current:8A. Rated voltage (III/2)  
:400V, pitch:5.08mm, Color:black, Contact surface



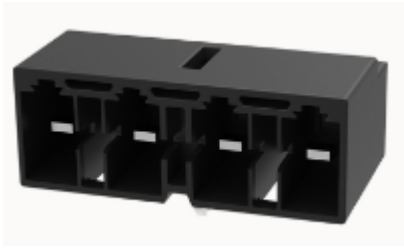
### **9EDGRB-HC-5.0**

Pluggable terminal blocks, Rated current:20A. Rated voltage (III/3)  
:300V, pitch:5.0mm, Color:black, Contact surface



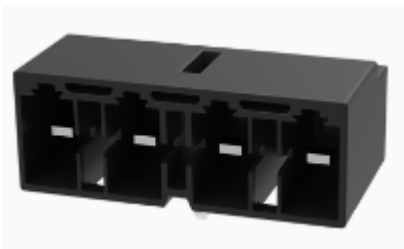
### **9EDGRB-HC-7.5**

Pluggable terminal blocks, Rated current:25A. Rated voltage (III/3)  
:630V, pitch:7.5mm, Color:black, Contact surface



### **9EDGRB-HC-5.0-DA**

Pluggable terminal blocks, Rated current: 20A. Rated voltage (III/3)  
: 500V, pitch: 5.0mm, Color: black, Contact surface



### **5EDGA-7.62**

Pluggable terminal blocks, Rated current: 41A. Rated voltage (III/2)  
: 800V, pitch: 7.62mm, Color: Green, Contact surface



### **5EDGA-7.62-200Z**

Pluggable terminal blocks, Reversed pin, Rated current: 41A. Rated voltage (III/2)  
: 800V, pitch: 7.62mm, Color: Green, Contact surface



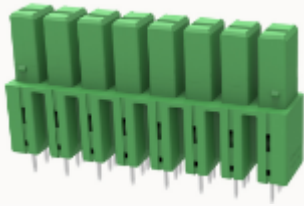
## 5EDGAM-7.62

Pluggable terminal blocks, Rated current:41A. Rated voltage (III/2)  
:800V, pitch:7.62mm, Color:Green, Contact surface



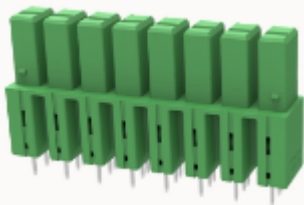
## 5EDGAM-7.62-200Z

Pluggable terminal blocks, Reversed pin, Rated current:41A. Rated voltage (III/2)  
:800V, pitch:7.62mm, Color:Green, Contact surface



## 5EDGB-7.62

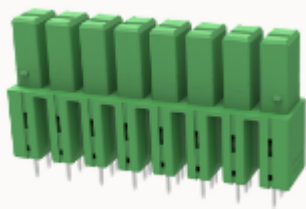
Pluggable terminal blocks, Rated current:41A. Rated voltage (III/2)  
:800V, pitch:7.62mm, Color:Green, Contact surface



## 5EDGBM-7.62

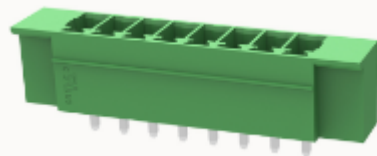
Pluggable terminal blocks, Rated current:41A. Rated voltage (III/2)  
:800V, pitch:7.62mm, Color:Green, Contact surface





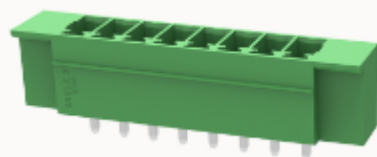
### **15EDGRMG-3.5**

Pluggable terminal blocks, Rated current: 7A. Rated voltage (II/2): 250V, pitch: 3.5mm, Color: green, Contact surface



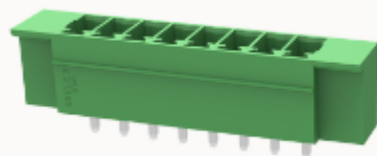
### **15EDGVMG-3.5**

Pluggable terminal blocks, Rated current: 7A. Rated voltage (II/2): 250V, pitch: 3.5mm, Color: green, Contact surface



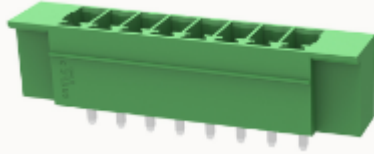
### **2EDGRMG-5.08**

Pluggable terminal blocks, Rated current: 20A. Rated voltage (III/2): 320V, pitch: 5.08mm, Color: green, Contact surface



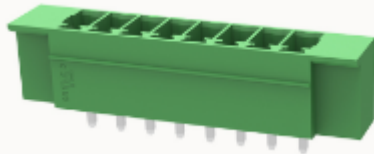
## 2EDGVMG-5.08

Pluggable terminal blocks, Rated current: 20A. Rated voltage (III/2)  
: 320V, pitch: 5.08mm, Color: green, Contact surface



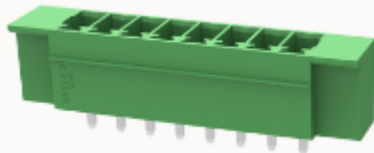
## 9EDGRN-5.08

Pluggable terminal blocks, Rated current: 16A. Rated voltage (III/2)  
: 160V, pitch: 5.08mm, Color: black, Contact surface



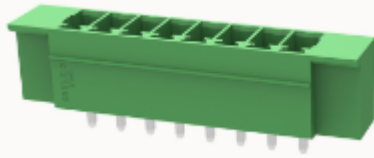
## 9EDGRB-7.62

Pluggable terminal blocks, Rated current: 20A. Rated voltage (III/2)  
: 630V, pitch: 7.62mm, Color: black, Contact surface



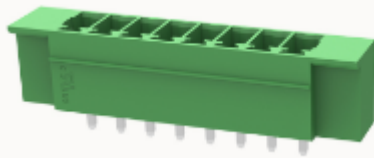
## 2EDGRHC-5.08

Pluggable terminal blocks, Rated current: 8A. Rated voltage (III/2)  
: 400V, pitch: 5.08mm, Color: black, Contact surface



### **DG332J-THR-5.0**

Needle connector, Rated current : 12A, Rated voltage (III/2) : 250V, Pitch : 5.0mm, Color : Black, Contact surface : Tin



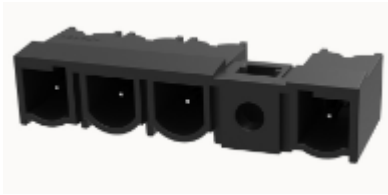
### **9EDGRS-7.62**

Pluggable terminal blocks, Rated current: 29A. Rated voltage (III/2) : 500V, pitch: 7.62mm, Color: black, Contact surface



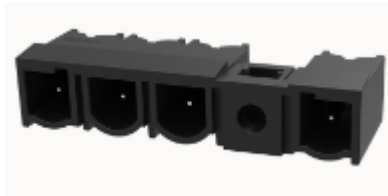
### **9EDGRS-7.62-GL**

Pluggable terminal blocks, With grounding function, Rated current: 29A. Rated voltage (III/2) : 500V, pitch: 7.62mm, Color: black, Contact surface



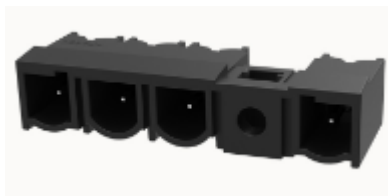
### **9EDGRS-7.62-GR**

Pluggable terminal blocks,With grounding function,Rated current:29A.Rated voltage (III/2)  
:500V,pitch:7.62mm,Color:black,Contact surface



### **9EDGRS-10.16**

Pluggable terminal blocks,Rated current:78.3A.Rated voltage (III/2)  
:1000V,pitch:10.16mm,Color:black,Contact surface :Ag



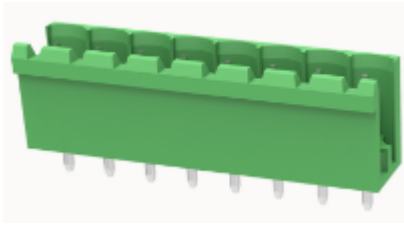
### **9EDGRS-10.16-GL**

Pluggable terminal blocks,With grounding function,Rated current:78.3A.Rated voltage (III/2)  
:1000V,pitch:10.16mm,Color:black,Contact surface :Ag



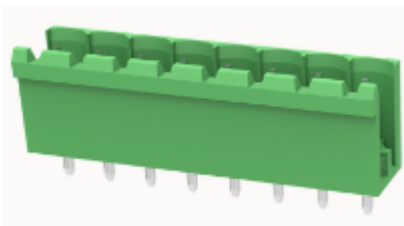
### **9EDGRS-10.16-GR**

Pluggable terminal blocks,With grounding function,Rated current:78.3A.Rated voltage (III/2)  
:1000V,pitch:10.16mm,Color:black,Contact surface :Ag



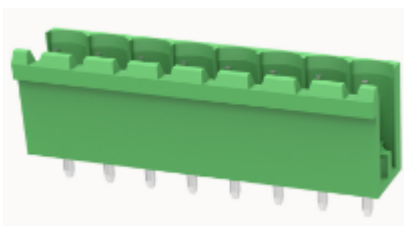
## **2EDGV-5.0**

Pluggable Terminal Blocks,Rated current : 20A.Rated voltage (Ⅲ/2) : 320V,pitch : 5.0mm,Color  
: green,Contact surface



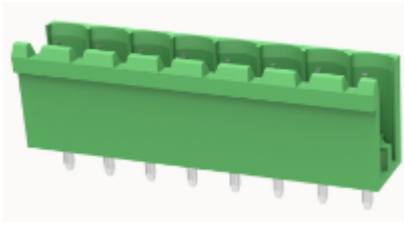
## **2EDGV-5.08**

Pluggable Terminal Blocks,Rated current : 20A.Rated voltage (Ⅲ/2) : 320V,pitch : 5.08mm,Color  
: green,Contact surface



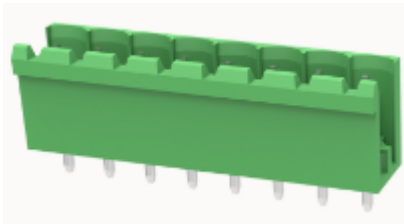
## **15EDGVT-3.5**

Pluggable Terminal Blocks,nominal current7A,Rated voltage(Ⅱ/2) :  
250V,pitch:3.5mm,Color:green,Contact surface



### **15EDGVHM-3.5**

Pluggable Terminal Blocks,nominal current7A,Rated voltage( II /2) :  
250V,pitch:3.5mm,Color:green,Contact surface



### **5CDG-7.62**

Pluggable Terminal Blocks,nominal current32A,Rated voltage(III/2) :  
400V,pitch:7.62mm,Color:green,Contact surface



### **15EDGRC-3.5**

Pluggable Terminal Blocks,nominal current7A,Rated voltage( II /2) :  
250V,pitch:3.5mm,Color:green,Contact surface



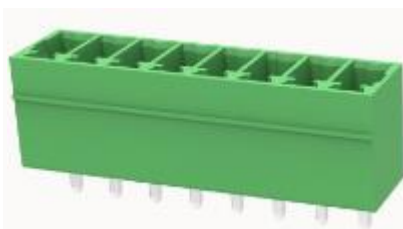
### **15EDGRM-3.5**

Pluggable Terminal Blocks,nominal current7A,Rated voltage(  $U$  /2) :  
250V,pitch:3.5mm,Color:green,Contact surface



### **15EDGRM-3.81**

Pluggable Terminal Blocks,nominal current7A,Rated voltage(  $U$  /2) :  
250V,pitch:3.81mm,Color:green,Contact surface



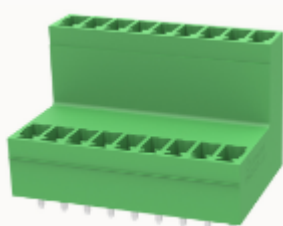
### **15EDGRN-3.5**

Pluggable Terminal Blocks,nominal current7A,Rated voltage(  $U$  /2) :  
250V,pitch:3.5mm,Color:green,Contact surface



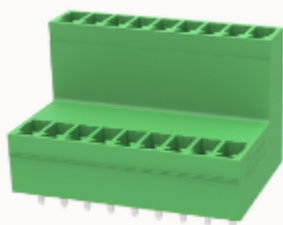
### **15EDGVC-3.5**

Pluggable Terminal Blocksnominal current7A.Rated voltage(  $U$  /2) :  
250V,pitch:3.5mm,Color:green,Contact surface



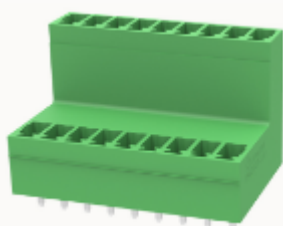
### **15EDGVM-3.5**

Pluggable Terminal Blocks,nominal current7A,Rated voltage(  $U$  /2) :  
250V,pitch:3.5mm,Color:green,Contact surface



### **15EDGVM-3.81**

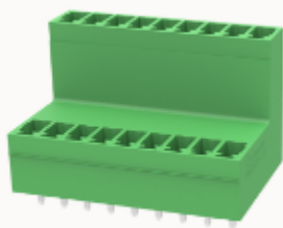
Pluggable Terminal Blocks,nominal current7A,Rated voltage(  $U$  /2) :  
250V,pitch:3.81mm,Color:green,Contact surface



### **15EDGVN-3.5**

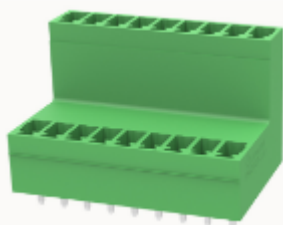
Pluggable Terminal Blocks,nominal current7A,Rated voltage(  $U$  /2) :  
250V,pitch:3.5mm,Color:green,Contact surface





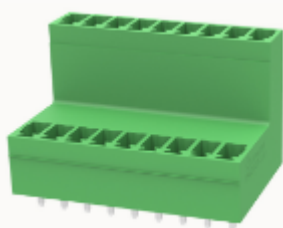
### **15EDGVT-3.81**

Pluggable Terminal Blocks,nominal current7A,Rated voltage(  $U$  /2) :  
250V,pitch:3.81mm,Color:green,Contact surface



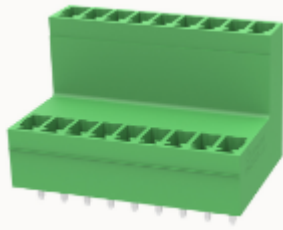
### **15EDGVTM-3.81**

Pluggable Terminal Blocks,nominal current7A,Rated voltage(  $U$  /2) :  
250V,pitch:3.81mm,Color:green,Contact surface



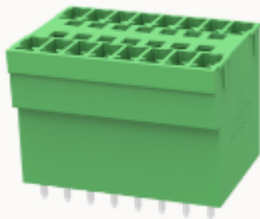
### **15EDGRH-3.5**

Pluggable Terminal Blocks,nominal current7A,Rated voltage(  $U$  /2) :  
250V,pitch:3.5mm,Color:green,Contact surface



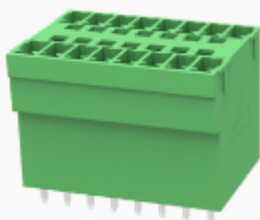
### **15EDGRH-3.81**

Pluggable Terminal Blocks,nominal current7A,Rated voltage( II /2) :  
250V,pitch:3.5mm,Color:green,Contact surface



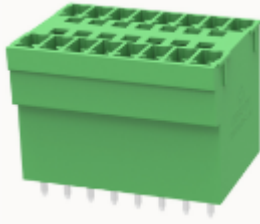
### **15EDGVH-3.5**

Pluggable Terminal Blocks,nominal current7A,Rated voltage( II /2) :  
250V,pitch:3.5mm,Color:green,Contact surface



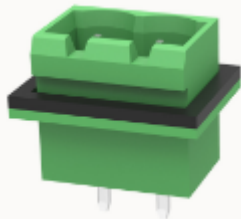
### **15EDGVH-3.81**

Pluggable Terminal Blocks,nominal current7A,Rated voltage( II /2) :  
250V,pitch:3.81mm,Color:green,Contact surface



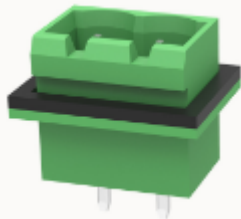
### **15EDGVHM-3.81**

Pluggable Terminal Blocks,nominal current7A,Rated voltage(  $U$  /2) :  
250V,pitch:3.81mm,Color:green,Contact surface



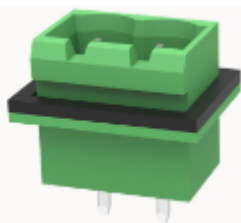
### **15EDGRC-5.08**

Pluggable Terminal Blocks,nominal current7A,Rated voltage(  $U$  /2) :  
450V,pitch:5.08mm,Color:green,Contact surface



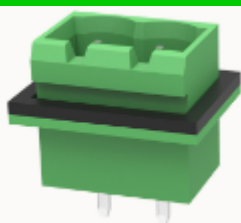
### **15EDGVC-5.08**

Pluggable Terminal Blocks,nominal current7A,Rated voltage(  $U$  /2) :  
450V,pitch:5.08mm,Color:green,Contact surface



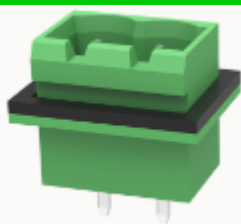
### **15EDGVM-5.08**

Pluggable Terminal Blocks,nominal current7A,Rated voltage( II /2) :  
450V,pitch:5.08mm,Color:green,Contact surface



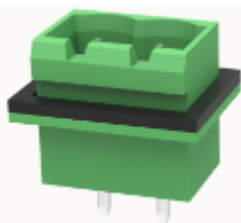
### **2EDGRC-7.5**

Pluggable Terminal Blocks,nominal current20A,Rated voltage(III/2) :  
400V,pitch:7.5mm,Color:green,Contact surface



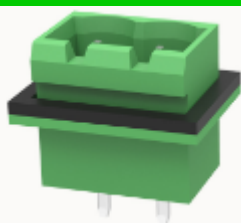
### **2EDGRC-7.62**

Pluggable Terminal Blocks,nominal current20A,Rated voltage(III/2) :  
400V,pitch:7.62mm,Color:green,Contact surface



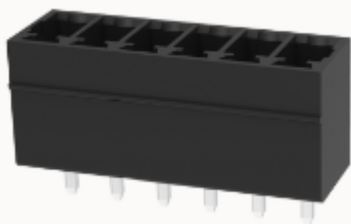
### **2CDGVC-5.08**

Pluggable Terminal Blocks,nominal current20A,Rated voltage(III/2) :  
320V,pitch:5.08mm,Color:green,Contact surface



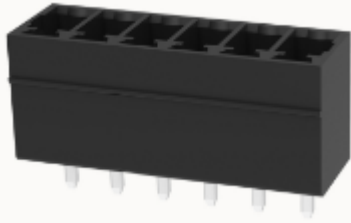
### **2CDGVM-5.08-100A(H)**

Pluggable Terminal Blocks,nominal current12A,Rated voltage(III/2) :  
320V,pitch:5.08mm,Color:green,Contact surface



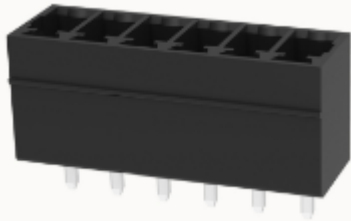
### **2CDGRM-5.08-100A(H)**

Pluggable Terminal Blocks,nominal current12A,Rated voltage(III/2) :  
320V,pitch:5.08mm,Color:green,Contact surface



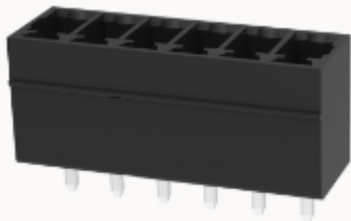
### **2CDGRM-5.08**

Pluggable Terminal Blocks,nominal current12A,Rated voltage(III/2) :  
320V,pitch:5.08mm,Color:green,Contact surface



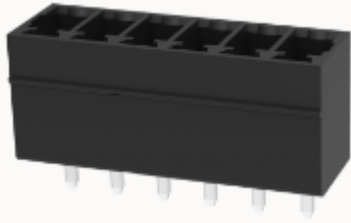
### **15EDGVC-THR-3.5-10A(H)**

Pluggable Terminal Blocks,nominal current8A,Rated voltage( II /2) :  
250V,pitch:3.5mm,Color:black,Contact surface



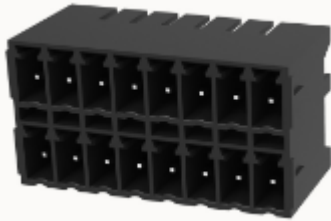
### **15EDGVC-THR-3.81-10A(H)**

Pluggable Terminal Blocks,nominal current8A,Rated voltage( II /2) :  
250V,pitch:3.81mm,Color:black,Contact surface



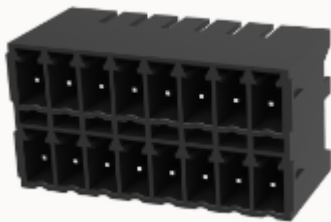
### **15EDGRHB-THR-3.5-10A(H)**

Pluggable Terminal Blocks,nominal current8A,Rated voltage( II /2) :  
250V,pitch:3.5mm,Color:black,Contact surface



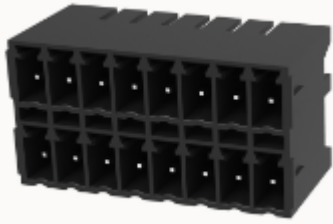
### **15EDGRHB-THR-3.81**

Pluggable terminal blocks,Rated current:8A.Rated voltage ( III/2)  
:160V,pitch:3.81mm,Color:Black,Contact surface



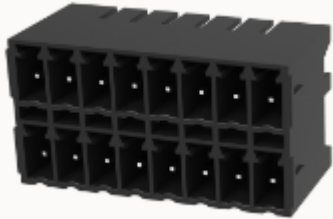
### **15EDGRHBN-THR-3.5-10A(H)**

Pluggable Terminal Blocks,nominal current8A,Rated voltage( II /2) :  
250V,pitch:3.5mm,Color:black,Contact surface



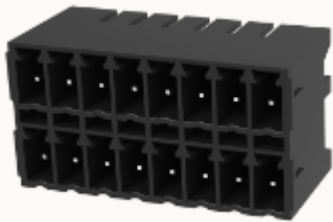
### **15EDGVHB-THR-3.5-10A(H)**

Pluggable Terminal Blocks,nominal current8A,Rated voltage( II/2) :  
250V,pitch:3.5mm,Color:black,Contact surface



### **2EDGRC-THR-5.08**

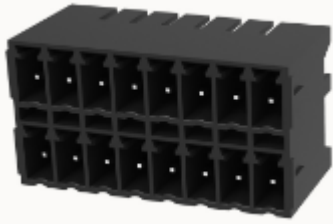
Pluggable Terminal Blocks,nominal current20A,Rated voltage( III/3) :  
320V,pitch:5.08mm,Color:black,Contact surface



### **2EDGVM-THR-5.08-10A(H)**

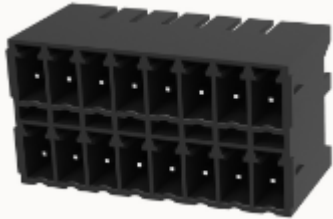
Pluggable Terminal Blocks,nominal current20A,Rated voltage( III/3) :  
320V,pitch:5.08mm,Color:black,Contact surface





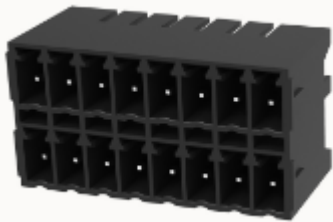
### **5CDG-7.62**

Pluggable Terminal Blocks,nominal current32A,Rated voltage( III/2) :  
400V,pitch:7.62mm,Color:green,Contact surface



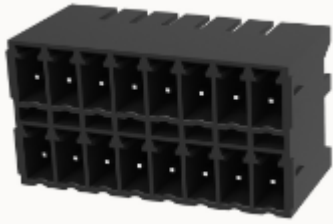
### **15EDGRT-3.5**

Pluggable Terminal Blocks,nominal current7A,Rated voltage( II/2) :  
250V,pitch:3.5mm,Color:green,Contact surface



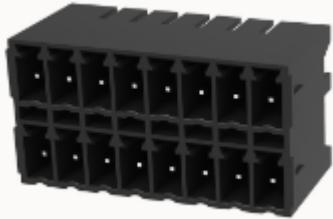
### **15EDGVTM-3.5**

Pluggable Terminal Blocks,nominal current7A,Rated voltage( II/2) :  
250V,pitch:3.5mm,Color:green,Contact surface



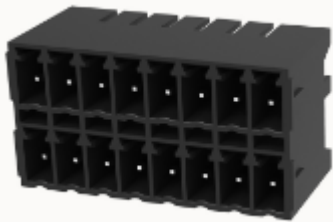
### **15EDGVM-THR-3.5**

Pluggable Terminal Blocks,nominal current7A,Rated voltage( II /2) :  
250V,pitch:3.5mm,Color:black,Contact surface



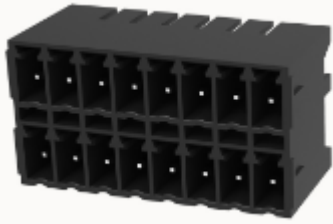
### **15EDGVHBN-THR-3.5-10A(H)**

Pluggable Terminal Blocks,nominal current7A,Rated voltage( II /2) :  
250V,pitch:3.5mm,Color:black,Contact surface



### **2CDGRC-5.08**

Pluggable Terminal Blocks,nominal current20A,Rated voltage(III/2) :  
320V,pitch:5.08mm,Color:green,Contact surface



### 15EDGVM-THR-3.81

Pluggable Terminal Blocks,nominal current8A,Rated voltage( II/2) :  
250V,pitch:3.81mm,Color:black,Contact surface:



### 2EDGRC-THR-5.08

Pluggable Terminal Blocks,nominal current20A,Rated voltage( III/3) :  
320V,pitch:5.08mm,Color:black,Contact surface



### 5EDGRL-7.62

Pluggable Terminal Blocks, Rated current : 41A, Rated valtage (III/2) : 630V, Pitch :  
7.62mm, Color : Green, Contact surface : Tin



### 5EDGVL-7.62

Pluggable Terminal Blocks, Rated current : 41A, Rated voltage (Ⅲ/2) : 630V, Pitch : 7.62mm, Color : Green, Contact surface : Tin



### 5EDGRC-10.16

Pluggable terminal blocks, Rated current: 57A. Rated voltage (Ⅲ/3) : 600V, pitch: 10.16mm, Color: green, Contact surface : silver



### 5EDGRC-7.62

Pluggable terminal blocks, Rated current: 32A. Rated voltage (Ⅲ/2) : 400V, pitch: 7.62mm, Color: green, Contact surface



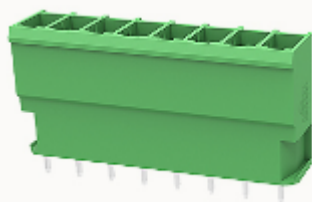
### 5EDGRG-10.16

Pluggable terminal blocks, Rated current: 57A. Rated voltage (Ⅲ/3) : 600V, pitch: 10.16mm, Color: green, Contact surface : silver



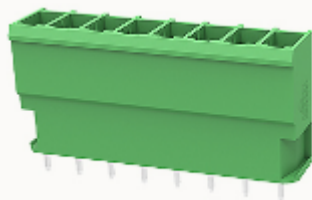
### **5EDGRHC-7.62**

Pluggable terminal blocks, Rated current: 41A. Rated voltage (Ⅲ/2)  
: 630V, pitch: 7.62mm, Color: green, Contact surface



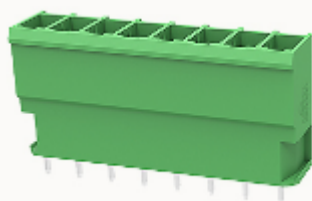
### **5EDGRM-10.16**

Pluggable terminal blocks, Rated current: 57A. Rated voltage (Ⅲ/3)  
: 600V, pitch: 10.16mm, Color: green, Contact surface : silver



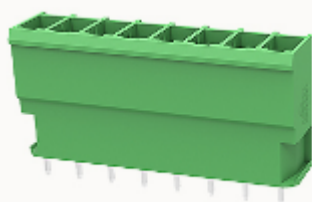
### **5EDGRM-7.62**

Pluggable terminal blocks, Rated current: 32A. Rated voltage (Ⅲ/3)  
: 400V, pitch: 7.62mm, Color: green, Contact surface



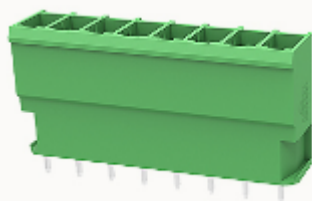
### **5EDGVC-10.16**

Pluggable terminal blocks, Rated current: 57A. Rated voltage (Ⅲ/3)  
: 600V, pitch: 10.16mm, Color: green, Contact surface : silver



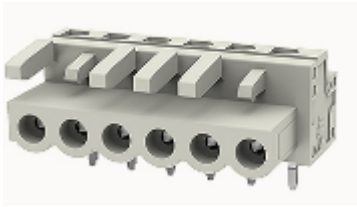
### **5EDGVC-7.62**

Pluggable terminal blocks, Rated current: 32A. Rated voltage (Ⅲ/3)  
: 400V, pitch: 7.62mm, Color: green, Contact surface



### **5EDGVM-7.62**

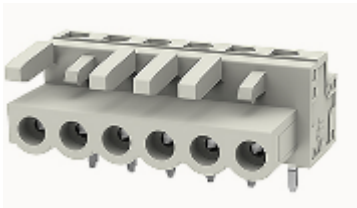
Pluggable terminal blocks, Rated current: 32A. Rated voltage (Ⅲ/3)  
: 400V, pitch: 7.62mm, Color: green, Contact surface



### **8EDGA-5.0**

Pluggable terminal blocks, Rated current: 20A. Rated voltage (III/3)  
: 320V, pitch: 5.0mm, Color: gray, Contact surface

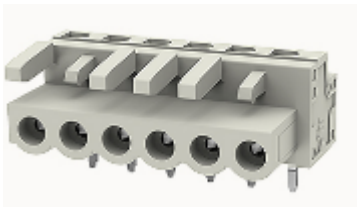
---



### **8EDGB-5.0**

Pluggable terminal blocks, Rated current: 20A. Rated voltage (III/3)  
: 320V, pitch: 5.0mm, Color: gray, Contact surface

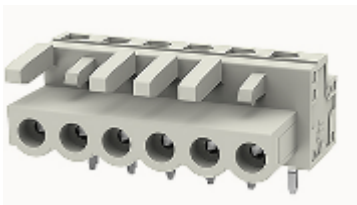
---



### **8EDGB-7.5**

Pluggable terminal blocks, Rated current: 20A. Rated voltage (III/3)  
: 320V, pitch: 7.5mm, Color: gray, Contact surface

---



### **8EDGD-5.0**

Pluggable terminal blocks, Rated current: 20A. Rated voltage (III/3)  
: 320V, pitch: 5.0mm, Color: gray, Contact surface

---



### **5EDGRHM-7.62**

Pluggable terminal blocks, Rated current: 41A. Rated voltage (III/2)  
: 630V, pitch: 7.62mm, Color: green, Contact surface

---



### **5EDGVM-10.16**

Pluggable terminal blocks, Rated current: 57A. Rated voltage (III/3)  
: 600V, pitch: 10.16mm, Color: green, Contact surface : silver

---

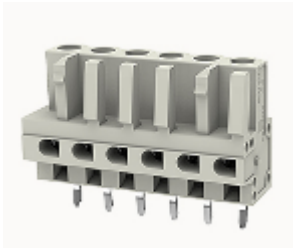


### **8EDGA-7.5**

Pluggable terminal blocks, Rated current: 20A. Rated voltage (III/3)  
: 320V, pitch: 7.5mm, Color: gray, Contact surface

---





### **8EDGBM-5.0**

Pluggable terminal blocks, Rated current:20A. Rated voltage (III/3)  
:320V, pitch:5.0mm, Color:gray, Contact surface



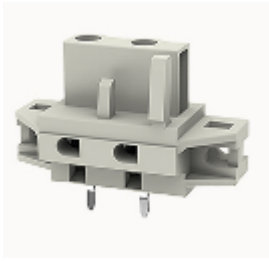
### **8EDGD-7.5**

Pluggable terminal blocks, Rated current:20A. Rated voltage (III/3)  
:320V, pitch:7.5mm, Color:gray, Contact surface



### **8EDGBM-7.5**

Pluggable terminal blocks, Rated current:20A. Rated voltage (III/3)  
:320V, pitch:7.5mm, Color:gray, Contact surface



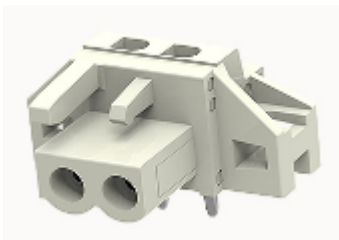
### **5EDGVHC-7.62**

Pluggable terminal blocks, Rated current: 41A. Rated voltage (Ⅲ/2)  
: 630V, pitch: 7.62mm, Color: green, Contact surface



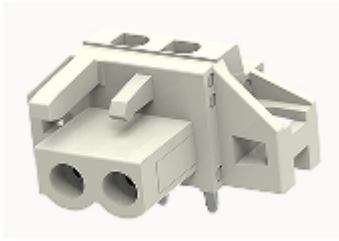
### **5EDGVHM-7.62**

Pluggable terminal blocks, Rated current: 41A. Rated voltage (Ⅲ/2)  
: 630V, pitch: 7.62mm, Color: green, Contact surface



### **8EDGAM-5.0**

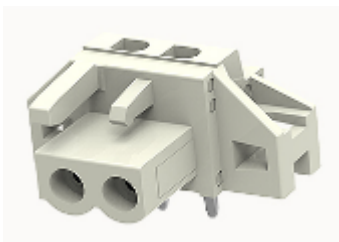
Pluggable terminal blocks, Rated current: 20A. Rated voltage (Ⅲ/3)  
: 320V, pitch: 5.0mm, Color: gray, Contact surface



### **8EDGC-5.0**

Pluggable terminal blocks, Rated current: 20A. Rated voltage (III/3)  
: 320V, pitch: 5.0mm, Color: gray, Contact surface

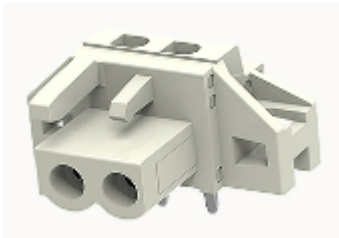
---



### **8EDGCM-5.0**

Pluggable terminal blocks, Rated current: 20A. Rated voltage (III/3)  
: 320V, pitch: 5.0mm, Color: gray, Contact surface

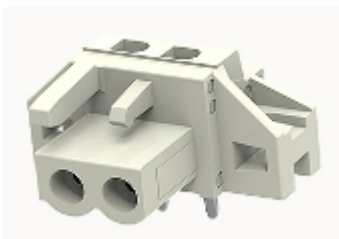
---



### **8EDGDM-5.0**

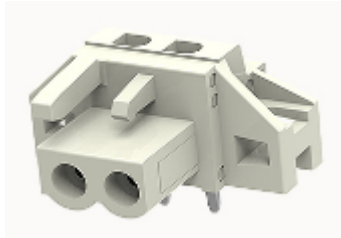
Pluggable terminal blocks, Rated current: 20A. Rated voltage (III/3)  
: 320V, pitch: 5.0mm, Color: gray, Contact surface

---



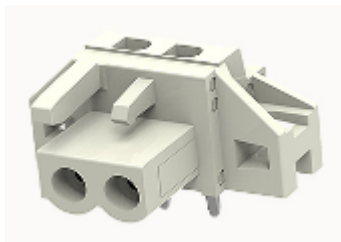
## 8EDGC-7.5

Pluggable terminal blocks, Rated current: 20A. Rated voltage (III/3)  
: 320V, pitch: 7.5mm, Color: gray, Contact surface



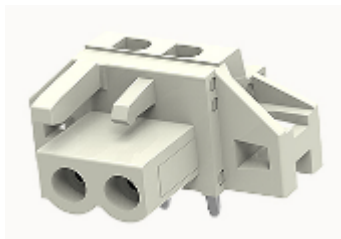
## 8EDGAM-7.5

Pluggable terminal blocks, Rated current: 20A. Rated voltage (III/3)  
: 320V, pitch: 7.5mm, Color: gray, Contact surface



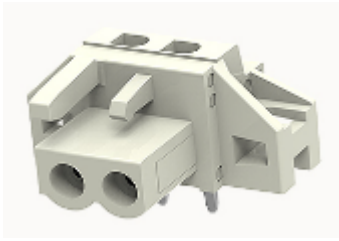
## 8EDGCM-7.5

Pluggable terminal blocks, Rated current: 20A. Rated voltage (III/3)  
: 320V, pitch: 7.5mm, Color: gray, Contact surface



## 8EDGDM-7.5

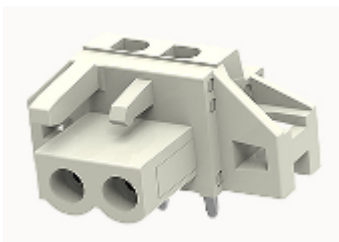
Pluggable terminal blocks, Rated current: 20A. Rated voltage (III/3)  
: 320V, pitch: 7.5mm, Color: gray, Contact surface



### **15CDGV-3.81**

Pluggable terminal blocks, Rated current: 7A. Rated voltage (II/2)  
: 250V, pitch: 3.81mm, Color: green, Contact surface

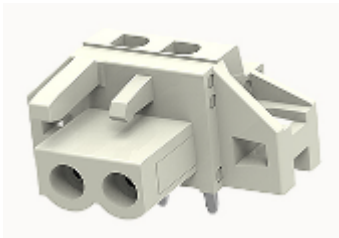
---



### **15EDGLC-3.5**

Pluggable terminal blocks, Rated current: 12A. Rated voltage (II/2)  
: 250V, pitch: 3.5mm, Color: green, Contact surface

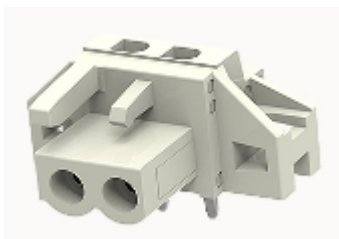
---



### **15EDGLC-3.81**

Pluggable terminal blocks, Rated current: 12A. Rated voltage (II/2)  
: 250V, pitch: 3.81mm, Color: green, Contact surface

---



## 15EDGRC-2.5

Pluggable terminal blocks, Rated current: 5A. Rated voltage (Ⅱ/2)  
: 250V, pitch: 2.5mm, Color: green, Contact surface



## 15EDGRC-3.81

Pluggable terminal blocks, Rated current: 7A. Rated voltage (Ⅱ/2)  
: 250V, pitch: 3.81mm, Color: green, Contact surface



## 15EDGRC-LD-3.81

Pluggable terminal blocks, Rated current: 7A. Rated voltage (Ⅱ/2)  
: 250V, pitch: 3.81mm, Color: green, Contact surface



## 15EDGRC-THR-2.5tape&reel package

Pluggable terminal blocks, Rated current: 5A. Rated voltage (Ⅱ/2)  
: 250V, pitch: 2.5mm, Color: black, Contact surface



### **15EDGRC-THR-2.5**

Pluggable terminal blocks, Rated current: 5A. Rated voltage (Ⅱ/2)  
: 250V, pitch: 2.5mm, Color: black, Contact surface

---



### **15EDGRC-THR-3.5tape&reel package**

Pluggable terminal blocks, Rated current: 8A. Rated voltage (Ⅲ/2)  
: 250V, pitch: 3.5mm, Color: black, Contact surface

---



### **15EDGRC-THR-3.5**

Pluggable terminal blocks, Rated current: 8A. Rated voltage (Ⅲ/2)  
: 250V, pitch: 3.5mm, Color: black, Contact surface

---



### **15EDGRH-2.5**

Pluggable terminal blocks, Rated current: 5A. Rated voltage (Ⅱ/2)  
: 250V, pitch: 2.5mm, Color: green, Contact surface

---



### **15EDGRHDM-3.5**

Pluggable terminal blocks, Rated current: 10A. Rated voltage (Ⅲ/2)  
: 125V, pitch: 3.5mm, Color: green, Contact surface

---



### **15EDGRHM-3.81**

Pluggable terminal blocks, Rated current: 7A. Rated voltage (Ⅱ/2)  
: 250V, pitch: 3.81mm, Color: green, Contact surface

---



### **15EDGRM-5.08**

Pluggable terminal blocks, Rated current: 7A. Rated voltage (Ⅱ/2)  
: 450V, pitch: 5.08mm, Color: green, Contact surface

---



### **15EDGRMG-3.81**

Pluggable terminal blocks, Rated current: 7A. Rated voltage (Ⅲ/2)  
: 250V, pitch: 3.81mm, Color: green, Contact surface

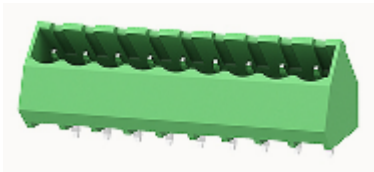
---





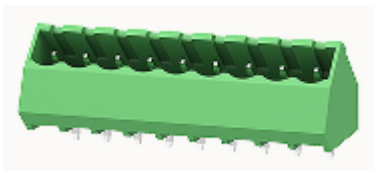
### **15EDGRM-LD-3.81**

Pluggable terminal blocks, Rated current:7A. Rated voltage ( II /2)  
:250V, pitch:3.81mm, Color:green, Contact surface



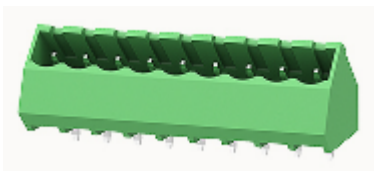
### **15EDGRM-THR-3.5tape&reel package**

Pluggable terminal blocks, Rated current:8A. Rated voltage ( II /2)  
:250V, pitch:3.5mm, Color:black, Contact surface



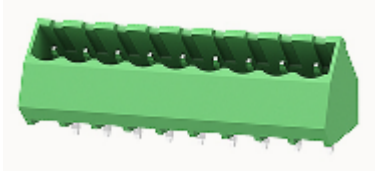
### **15EDGRM-THR-3.81tape&reel package**

Pluggable terminal blocks, Rated current:8A. Rated voltage ( II /2)  
:250V, pitch:3.81mm, Color:black, Contact surface



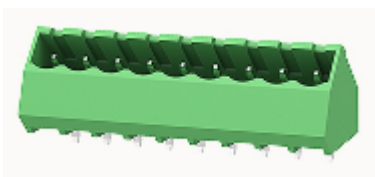
### **15EDGVC-2.5**

Pluggable terminal blocks, Rated current:5A. Rated voltage ( II /2)  
:250V, pitch:2.5mm, Color:green, Contact surface



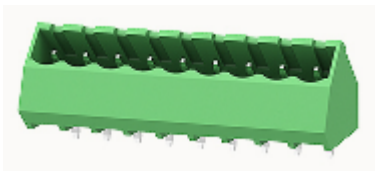
### **15EDGVC-3.81**

Pluggable terminal blocks, Rated current: 7A. Rated voltage (Ⅱ/2)  
: 250V, pitch: 3.81mm, Color: green, Contact surface



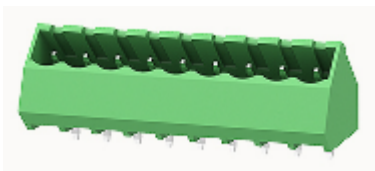
### **15EDGVC-THR-2.5tape&reel package**

Pluggable terminal blocks, Rated current: 5A. Rated voltage (Ⅲ/2)  
: 250V, pitch: 2.5mm, Color: black, Contact surface



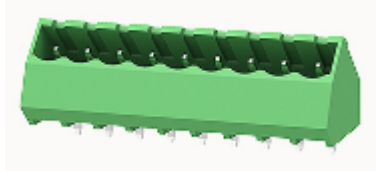
### **2CDGB-5.08**

Pluggable terminal blocks, Rated current: 12A. Rated voltage (Ⅲ/2)  
: 320V, pitch: 5.08mm, Color: green, Contact surface



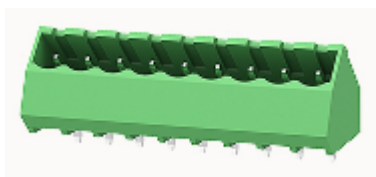
### **2EDGJ-5.08**

Pluggable terminal blocks, Rated current: 15A. Rated voltage (Ⅲ/2)  
: 320V, pitch: 5.08mm, Color: green, Contact surface



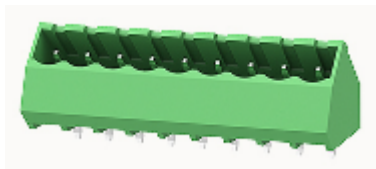
### **2EDGL-5.08**

Pluggable terminal blocks, Rated current: 20A. Rated voltage (Ⅲ/2)  
: 320V, pitch: 5.08mm, Color: green, Contact surface



### **2EDGLC-5.08**

Pluggable terminal blocks, Rated current: 20A. Rated voltage (Ⅲ/2)  
: 320V, pitch: 5.08mm, Color: green, Contact surface



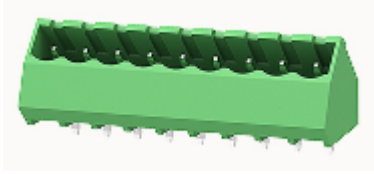
### **2EDGLF-5.0**

Pluggable terminal blocks, Rated current: 20A. Rated voltage (Ⅲ/2)  
: 320V, pitch: 5.0mm, Color: green, Contact surface



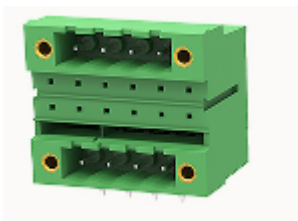
### **2EDGR-5.0**

Pluggable terminal blocks, Rated current: 20A. Rated voltage (Ⅲ/2)  
: 320V, pitch: 5.0mm, Color: green, Contact surface



### **2EDGR-5.08**

Pluggable terminal blocks, Rated current: 20A. Rated voltage (Ⅲ/2)  
: 320V, pitch: 5.08mm, Color: green, Contact surface



### **2EDGR-7.5**

Pluggable terminal blocks, Rated current: 20A. Rated voltage (Ⅲ/2)  
: 400V, pitch: 7.5mm, Color: green, Contact surface



### **2EDGR-7.62**

Pluggable terminal blocks, Rated current: 20A. Rated voltage (Ⅲ/2)  
: 400V, pitch: 7.62mm, Color: green, Contact surface



### **2EDGRC-5.0**

Pluggable terminal blocks, Rated current:20A. Rated voltage (Ⅲ/2)  
:320V, pitch:5.0mm, Color:green, Contact surface



## 2EDGRC-5.08

Pluggable terminal blocks, Rated current:20A. Rated voltage (Ⅲ/2)  
:320V, pitch:5.08mm, Color:green, Contact surface



## 2EDGRF-5.0

Pluggable terminal blocks, Rated current:20A. Rated voltage (Ⅲ/2)  
:320V, pitch:5.0mm, Color:green, Contact surface



## 2EDGRH-5.08

Pluggable terminal blocks, Rated current:10A. Rated voltage (Ⅲ/2)  
:320V, pitch:5.08mm, Color:green, Contact surface



### **2EDGRHM-5.08**

Pluggable terminal blocks, Rated current: 10A. Rated voltage (Ⅲ/2)  
: 320V, pitch: 5.08mm, Color: green, Contact surface



### **2EDGRM-5.0**

Pluggable terminal blocks, Rated current: 20A. Rated voltage (Ⅲ/2)  
: 320V, pitch: 5.0mm, Color: green, Contact surface



### **2EDGRM-5.08**

Pluggable terminal blocks, Rated current: 20A. Rated voltage (Ⅲ/2)  
: 320V, pitch: 5.08mm, Color: green, Contact surface



### **2EDGRM-7.62**

Pluggable terminal blocks, Rated current: 20A. Rated voltage (Ⅲ/2)  
: 400V, pitch: 7.62mm, Color: green, Contact surface



### **2EDGRT-5.0**

Pluggable terminal blocks, Rated current:10A. Rated voltage (Ⅲ/2)  
:320V, pitch:5.0mm, Color:green, Contact surface



### **2EDGRT-5.08**

Pluggable terminal blocks, Rated current:10A. Rated voltage (Ⅲ/2)  
:320V, pitch:5.08mm, Color:green, Contact surface



### **2EDGRTC-5.0**

Pluggable terminal blocks, Rated current:10A. Rated voltage (Ⅲ/2)  
:320V, pitch:5.0mm, Color:green, Contact surface



### **2EDGRTC-5.08**

Pluggable terminal blocks,Rated current:10A.Rated voltage (Ⅲ/2)  
:320V,pitch:5.08mm,Color:green,Contact surface



### **2EDGR-THR-5.08**

Pluggable terminal blocks,Rated current:20A.Rated voltage (Ⅲ/2)  
:320V,pitch:5.08mm,Color:black,Contact surface



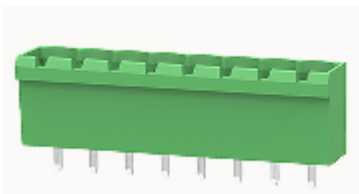
### **2EDGV-7.5**

Pluggable terminal blocks,Rated current:20A.Rated voltage (Ⅲ/2)  
:400V,pitch:7.5mm,Color:green,Contact surface



### **2EDGV-7.62**

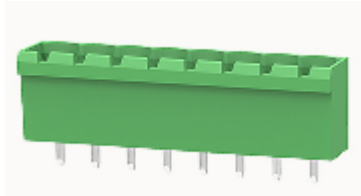
Pluggable terminal blocks,Rated current:20A.Rated voltage (Ⅲ/2)  
:400V,pitch:7.62mm,Color:green,Contact surface





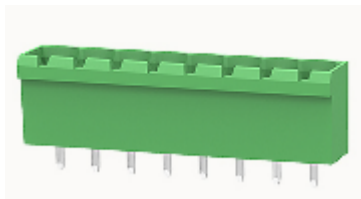
## 2EDGVC-5.0

Pluggable terminal blocks, Rated current: 20A. Rated voltage (Ⅲ/2)  
: 320V, pitch: 5.0mm, Color: green, Contact surface



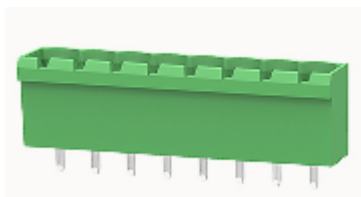
## 2EDGVC-5.08

Pluggable terminal blocks, Rated current: 20A. Rated voltage (Ⅲ/2)  
: 320V, pitch: 5.08mm, Color: green, Contact surface



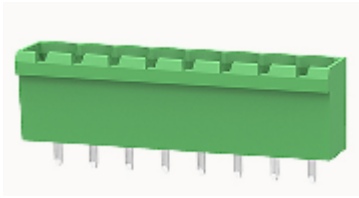
## 2EDGVC-7.5

Pluggable terminal blocks, Rated current: 20A. Rated voltage (Ⅲ/2)  
: 400V, pitch: 7.5mm, Color: green, Contact surface



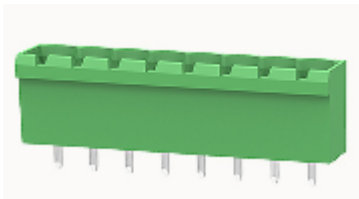
## 2EDGVC-7.62

Pluggable terminal blocks, Rated current: 20A. Rated voltage (Ⅲ/2)  
: 400V, pitch: 7.62mm, Color: green, Contact surface



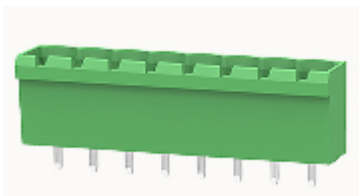
### **2EDGVC-THR-5.08**

Pluggable terminal blocks, Rated current: 20A. Rated voltage (Ⅲ/2)  
: 320V, pitch: 5.08mm, Color: black, Contact surface



### **2EDGVH-5.08**

Pluggable terminal blocks, Rated current: 10A. Rated voltage (Ⅲ/2)  
: 320V, pitch: 5.08mm, Color: green, Contact surface



### **2EDGVM-5.0**

Pluggable terminal blocks, Rated current: 20A. Rated voltage (Ⅲ/2)  
: 320V, pitch: 5.0mm, Color: green, Contact surface



### **2EDGVM-5.08**

Pluggable terminal blocks, Rated current: 20A. Rated voltage (Ⅲ/2)  
: 320V, pitch: 5.08mm, Color: green, Contact surface



### **2EDGVM-7.5**

Pluggable terminal blocks, Rated current: 20A. Rated voltage (Ⅲ/2)  
: 400V, pitch: 7.5mm, Color: green, Contact surface



### **2EDGVM-7.62**

Pluggable terminal blocks, Rated current: 20A. Rated voltage (Ⅲ/2)  
: 400V, pitch: 7.62mm, Color: green, Contact surface



### **2EDGVT-5.0**

Pluggable terminal blocks, Rated current: 10A. Rated voltage (Ⅲ/2)  
: 320V, pitch: 5.0mm, Color: green, Contact surface



### **2EDGVT-5.08**

Pluggable terminal blocks, Rated current: 10A. Rated voltage (Ⅲ/2)  
: 320V, pitch: 5.08mm, Color: green, Contact surface



### **2EDGVTC-5.08**

Pluggable terminal blocks, Rated current: 10A. Rated voltage (Ⅲ/2)  
: 320V, pitch: 5.08mm, Color: green, Contact surface



### **8EDGRC-2.5**

Pluggable terminal blocks, Rated current: 6A. Rated voltage (Ⅲ/3)  
: 130V, pitch: 2.5mm, Color: gray, Contact surface



### **8EDGRC-3.5**

Pluggable terminal blocks, Rated current: 10A. Rated voltage (Ⅲ/3)  
: 130V, pitch: 3.5mm, Color: gray, Contact surface



### **8EDGRC-5.0**

Pluggable terminal blocks, Rated current: 20A. Rated voltage (Ⅲ/3)  
: 320V, pitch: 5.0mm, Color: gray, Contact surface



### **8EDGRC-5.08**

Pluggable terminal blocks, Rated current: 20A. Rated voltage (III/3)  
: 320V, pitch: 5.08mm, Color: gray, Contact surface



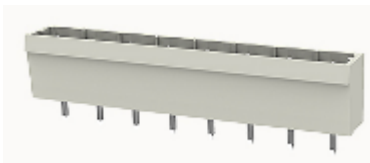
### **8EDGRC-7.5**

Pluggable terminal blocks, Rated current: 20A. Rated voltage (III/3)  
: 400V, pitch: 7.5mm, Color: gray, Contact surface



### **8EDGRC-7.62**

Pluggable terminal blocks, Rated current: 20A. Rated voltage (III/3)  
: 400V, pitch: 7.62mm, Color: gray, Contact surface



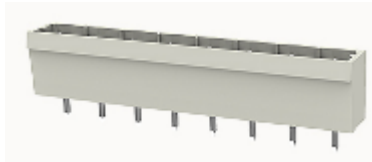
### **8EDGRCB-5.0**

Pluggable terminal blocks, Rated current: 20A. Rated voltage (III/3)  
: 320V, pitch: 5.0mm, Color: gray, Contact surface



### **8EDGRCB-7.5**

Pluggable terminal blocks, Rated current: 20A. Rated voltage (III/3)  
: 400V, pitch: 7.5mm, Color: gray, Contact surface



### **8EDGVC-2.5**

Pluggable terminal blocks, Rated current: 6A. Rated voltage (III/3)  
: 130V, pitch: 2.5mm, Color: gray, Contact surface



### **8EDGVC-3.5**

Pluggable terminal blocks, Rated current: 10A. Rated voltage (III/3)  
: 130V, pitch: 3.5mm, Color: gray, Contact surface



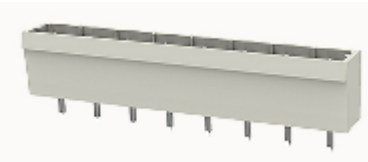
### **8EDGVC-3.81**

Pluggable terminal blocks,Rated current:10A.Rated voltage (III/3)  
:130V,pitch:3.81mm,Color:gray,Contact surface



**8EDGVC-5.0**

Pluggable terminal blocks,Rated current:20A.Rated voltage (III/3)  
:320V,pitch:5.0mm,Color:gray,Contact surface



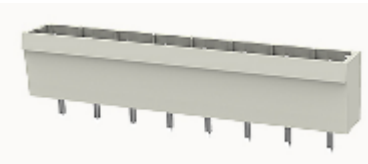
**8EDGVC-5.08**

Pluggable terminal blocks,Rated current:20A.Rated voltage (III/3)  
:320V,pitch:5.08mm,Color:gray,Contact surface



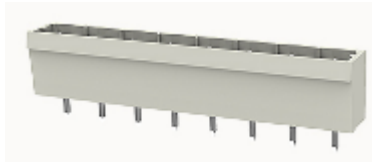
**8EDGVC-7.5**

Pluggable terminal blocks,Rated current:20A.Rated voltage (III/3)  
:400V,pitch:7.5mm,Color:gray,Contact surface



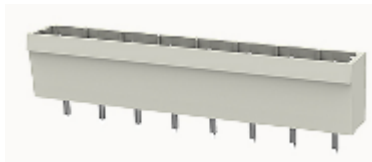
**8EDGVCB-5.0**

Pluggable terminal blocks, Rated current:20A. Rated voltage (III/3)  
:320V, pitch:5.0mm, Color:gray, Contact surface



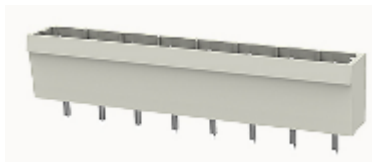
### **8EDGVCB-7.5**

Pluggable terminal blocks, Rated current:20A. Rated voltage (III/3)  
:400V, pitch:7.5mm, Color:gray, Contact surface



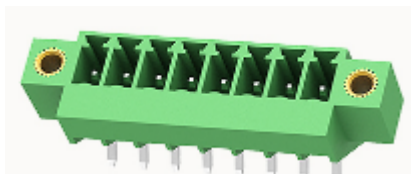
### **8EDGVC-THR-5.0**

Pluggable terminal blocks, Rated current:20A. Rated voltage (III/3)  
:320V, pitch:5.0mm, Color:gray, Contact surface



### **15EDGRM-THR-3.5**

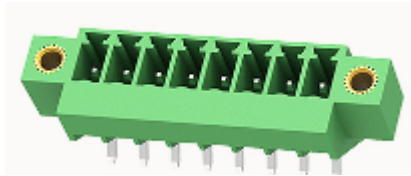
Pluggable terminal blocks, Rated current:8A. Rated voltage (II/2)  
:250V, pitch:3.5mm, Color:black, Contact surface



### **15EDGVHD-3.5**

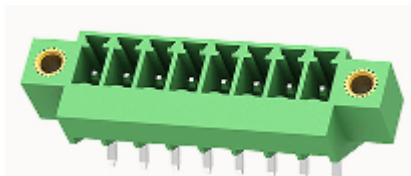


Pluggable terminal blocks, Rated current: 10A. Rated voltage (Ⅲ/2)  
: 125V, pitch: 3.5mm, Color: green, Contact surface



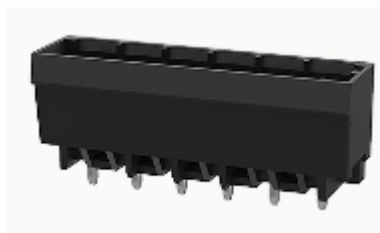
### **15EDGVMG-3.81**

Pluggable terminal blocks, Rated current: 7A. Rated voltage (Ⅲ/2)  
: 250V, pitch: 3.81mm, Color: green, Contact surface



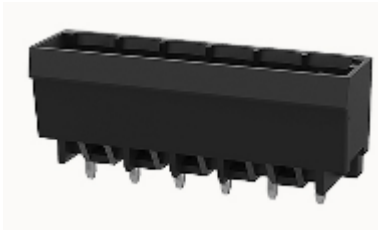
### **2EDGLF-THR-5.0**

Pluggable terminal blocks, Rated current: 20A. Rated voltage (Ⅲ/2)  
: 320V, pitch: 5.0mm, Color: black, Contact surface



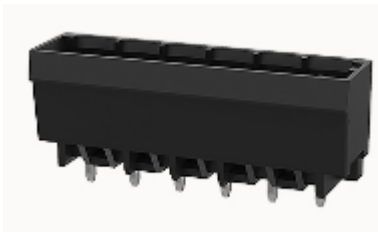
### **2EDGRF-THR-5.0**

Pluggable terminal blocks, Rated current: 20A. Rated voltage (Ⅲ/2)  
: 320V, pitch: 5.0mm, Color: black, Contact surface



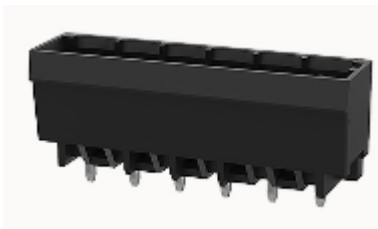
### **2EDGRH-5.0**

Pluggable terminal blocks, Rated current: 10A. Rated voltage (Ⅲ/2)  
: 320V, pitch: 5.0mm, Color: green, Contact surface



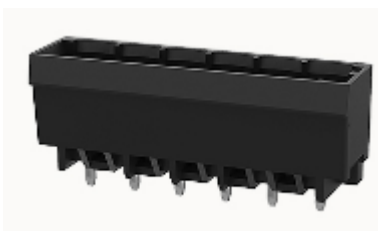
### **2EDGRTM-5.08**

Pluggable terminal blocks, Rated current: 10A. Rated voltage (Ⅲ/2)  
: 320V, pitch: 5.08mm, Color: green, Contact surface



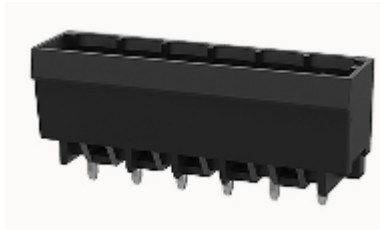
### **2EDGVC-THR-5.0**

Pluggable terminal blocks, Rated current: 20A. Rated voltage (Ⅲ/2)  
: 320V, pitch: 5.0mm, Color: green, Contact surface



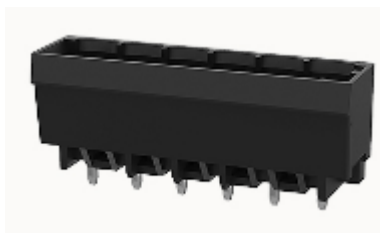
### **2EDGVTC-5.0**

Pluggable terminal blocks, Rated current:10A. Rated voltage (Ⅲ/2)  
:320V, pitch:5.0mm, Color:green, Contact surface



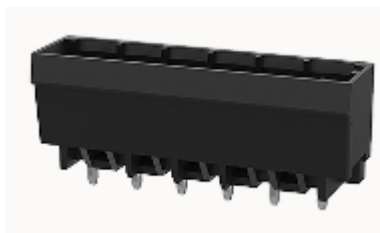
### **15EDGLM-3.5**

Pluggable terminal blocks, Rated current:12A. Rated voltage (Ⅱ/2)  
:250V, pitch:3.5mm, Color:green, Contact surface



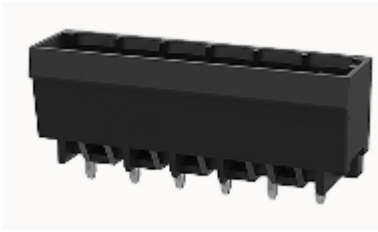
### **8EDGRCB-5.08**

Pluggable terminal blocks, Rated current:20A. Rated voltage (Ⅲ/3)  
:320V, pitch:5.08mm, Color:gray, Contact surface



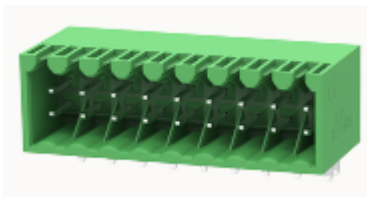
### **8EDGVC-THR-5.0tape&reel package**

Pluggable terminal blocks, Rated current:20A. Rated voltage (Ⅲ/3)  
:320V, pitch:5.0mm, Color:gray, Contact surface



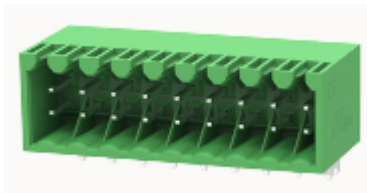
### **15EDGLM-3.81**

Pluggable terminal blocks, Rated current:12A. Rated voltage (Ⅱ/2)  
:250V, pitch:3.81mm, Color:green, Contact surface



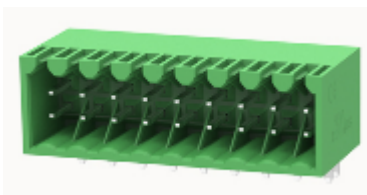
### **15EDGRC-THR-3.81tape&reel package**

Pluggable terminal blocks, Rated current:8A. Rated voltage (Ⅲ/2)  
:250V, pitch:3.81mm, Color:black, Contact surface



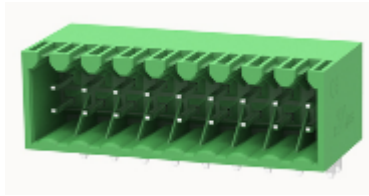
### **15EDGRC-THR-3.81**

Pluggable terminal blocks, Rated current:8A. Rated voltage (Ⅲ/2)  
:250V, pitch:3.81mm, Color:black, Contact surface



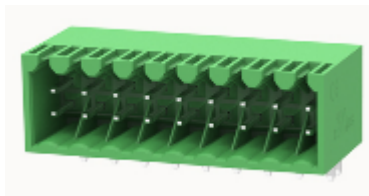
### **15EDGRHD-3.5**

Pluggable terminal blocks, Rated current: 10A. Rated voltage (Ⅲ/2)  
: 125V, pitch: 3.5mm, Color: green, Contact surface



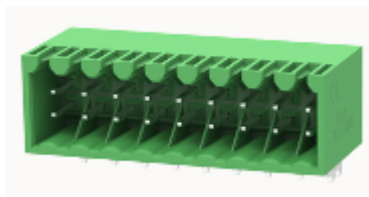
### **15EDGRM-THR-3.81**

Pluggable terminal blocks, Rated current: 8A. Rated voltage (Ⅱ/2)  
: 250V, pitch: 3.81mm, Color: black, Contact surface



### **15EDGRT-3.81**

Pluggable terminal blocks, Rated current: 7A. Rated voltage (Ⅱ/2)  
: 250V, pitch: 3.81mm, Color: green, Contact surface



### **15EDGVC-THR-2.5**

Pluggable terminal blocks, Rated current: 5A. Rated voltage (Ⅲ/2)  
: 250V, pitch: 2.5mm, Color: black, Contact surface



### **15EDGVH-2.5**

Pluggable terminal blocks, Rated current: 4A. Rated voltage (Ⅱ/2)  
: 100V, pitch: 2.5mm, Color: green, Contact surface

---



### **15EDGVHBN-THR-3.81**

Pluggable Terminal Blocks, nominal current 8A, Rated voltage (Ⅲ/2) :  
160V, pitch: 3.81mm, Color: black, Contact surface

---



### **15EDGVHB-THR-3.81**

Pluggable terminal blocks, Rated current: 8A. Rated voltage (Ⅲ/2)  
: 160V, pitch: 3.81mm, Color: black, Contact surface

---



### **2EDGRM-THR-5.08**

Pluggable terminal blocks, Rated current: 20A. Rated voltage (Ⅲ/2)  
: 320V, pitch: 5.08mm, Color: black, Contact surface

---



### **2EDGRTM-5.0**

Pluggable terminal blocks, Rated current: 10A. Rated voltage (Ⅲ/2)  
: 320V, pitch: 5.0mm, Color: green, Contact surface

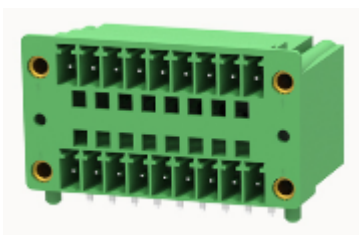
---



### **2EDGVHM-5.08**

Pluggable terminal blocks, Rated current: 10A. Rated voltage (Ⅲ/2)  
: 320V, pitch: 5.08mm, Color: green, Contact surface

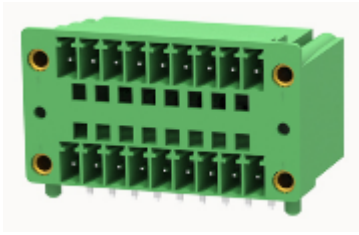
---



### **2EDGV-THR-5.08**

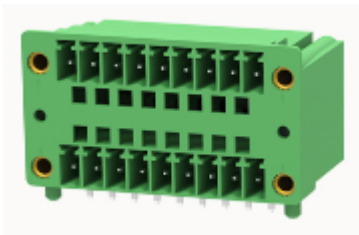
Pluggable terminal blocks, Rated current: 20A. Rated voltage (Ⅲ/2)  
: 320V, pitch: 5.08mm, Color: black, Contact surface

---



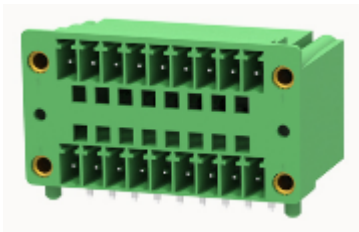
## 2EDGVTM-5.0

Pluggable terminal blocks, Rated current: 10A. Rated voltage (Ⅲ/2)  
: 320V, pitch: 5.0mm, Color: green, Contact surface



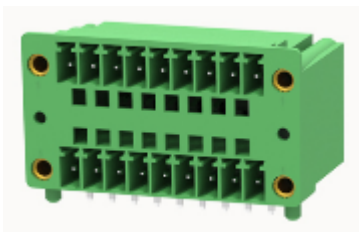
## 2EDGVTM-5.08

Pluggable terminal blocks, Rated current: 10A. Rated voltage (Ⅲ/2)  
: 320V, pitch: 5.08mm, Color: green, Contact surface



## 8EDGRC-3.81

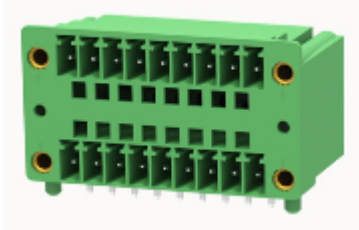
Pluggable terminal blocks, Rated current: 10A. Rated voltage (Ⅲ/3)  
: 130V, pitch: 3.81mm, Color: gray, Contact surface





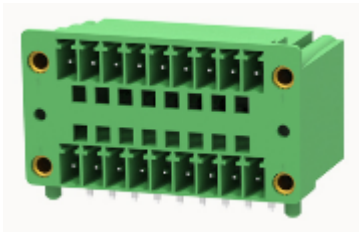
## 8EDGRH-3.5

Pluggable terminal blocks, Rated current: 10A. Rated voltage (II/2)  
: 250V, pitch: 3.5mm, Color: gray, Contact surface



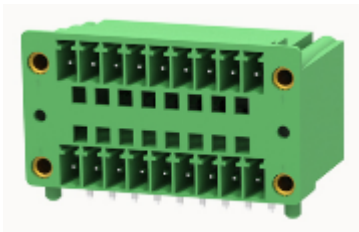
## 8EDGRHB-3.5

Pluggable terminal blocks, Rated current: 10A. Rated voltage (II/2)  
: 250V, pitch: 3.5mm, Color: gray, Contact surface



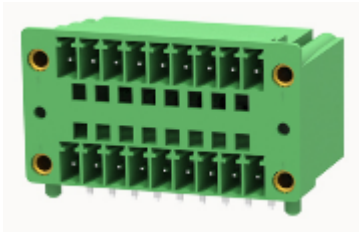
## 8EDGVC-7.62

Pluggable terminal blocks, Rated current: 20A. Rated voltage (III/3)  
: 400V, pitch: 7.62mm, Color: gray, Contact surface



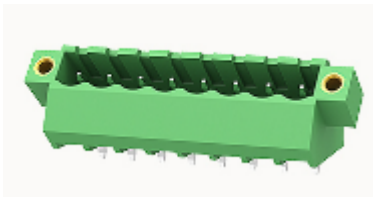
## 8EDGVCB-5.08

Pluggable terminal blocks, Rated current: 20A. Rated voltage (III/3)  
: 320V, pitch: 5.08mm, Color: gray, Contact surface



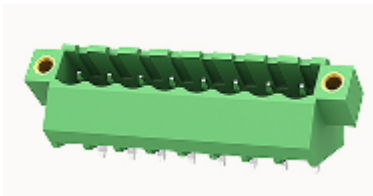
### **15EDGRHM-3.5**

Pluggable terminal blocks, Rated current: 7A. Rated voltage (II/2)  
: 250V, pitch: 3.5mm, Color: green, Contact surface



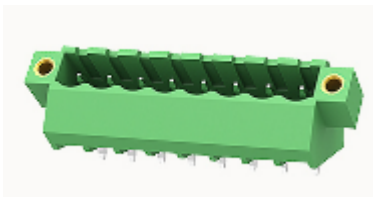
### **15EDGRTM-3.5**

Pluggable terminal blocks, Rated current: 7A. Rated voltage (II/2)  
: 250V, pitch: 3.5mm, Color: green, Contact surface



### **15EDGRTM-3.81**

Pluggable terminal blocks, Rated current: 7A. Rated voltage (II/2)  
: 250V, pitch: 3.81mm, Color: green, Contact surface



### **2EDGLM-5.08**

Pluggable terminal blocks, Rated current: 20A. Rated voltage (Ⅲ/2)  
: 320V, pitch: 5.08mm, Color: green, Contact surface



### **2EDGR-THR-5.0**

Pluggable terminal blocks, Rated current: 20A. Rated voltage (Ⅲ/2)  
: 320V, pitch: 5.0mm, Color: black, Contact surface



### **2EDGVHM-5.0**

Pluggable terminal blocks, Rated current: 10A. Rated voltage (Ⅲ/2)  
: 320V, pitch: 5.0mm, Color: green, Contact surface



### **2EDGV-THR-5.0**

Pluggable terminal blocks, Rated current: 20A. Rated voltage (Ⅲ/2)  
: 320V, pitch: 5.0mm, Color: green, Contact surface



## 2EDGRM-7.5

Pluggable terminal blocks, Rated current: 20A. Rated voltage (Ⅲ/2)  
: 400V, pitch: 7.5mm, Color: green, Contact surface



## 2EDGRHM-5.0

Pluggable terminal blocks, Rated current: 10A. Rated voltage (Ⅲ/2)  
: 320V, pitch: 5.0mm, Color: green, Contact surface



## 2EDGRC-THR-5.0

Pluggable terminal blocks, Rated current: 20A. Rated voltage (Ⅲ/2)  
: 320V, pitch: 5.0mm, Color: green, Contact surface



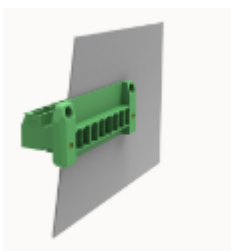
## 15EDGRHBN-THR-3.81

Pluggable terminal blocks, Rated current: 8A. Rated voltage (Ⅲ/2)  
: 160V, pitch: 3.81mm, Color: black, Contact surface



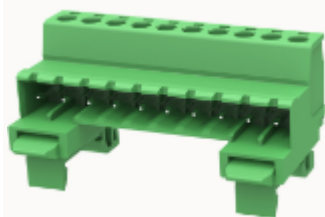
## DIN-Rail/Panel Mounting Connector

As the non-welded board connection solution of the pluggable terminal blocks ,it is applied to the occasions of din-rail/panel mounting



### 5EDGKRP-7.62

Through-wall terminal blocks, Rated current : 20A, Rated voltage (III/2) : 630V, pitch:7.62mm, Color : green, Contact surface



### **2EDG-VRK-5.08**

Pluggable Terminal Blocks,nominal current20A,Rated voltage(III/2) :  
320V,pitch:5.08mm,Color:green,Contact surface



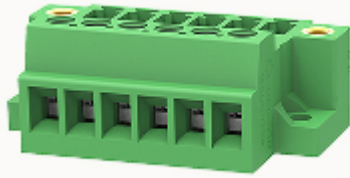
### **8EDG-STDD-5.0**

Pluggable Terminal Blocks,nominal current20A,Rated voltage(III/3) :  
320V,pitch:5.0mm,Color:grey,Contact surface



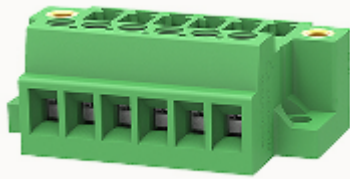
### **15EDG-GBM-3.81**

Pluggable terminal blocks,Rated current:7A.Rated voltage (III/2)  
:250V,pitch:3.81mm,Color:green,Contact surface



### **2EDG-DB-5.08**

Pluggable terminal blocks, Rated current: 12A. Rated voltage (III/2)  
: 320V, pitch: 5.08mm, Color: green, Contact surface



### **2EDG-DBM-5.08**

Pluggable terminal blocks, Rated current: 12A. Rated voltage (III/2)  
: 320V, pitch: 5.08mm, Color: green, Contact surface



### **2EDG-DK-5.08**

Pluggable terminal blocks, Rated current: 12A. Rated voltage (III/2)  
: 320V, pitch: 5.08mm, Color: green, Contact surface



### **2EDG-DKM-5.08**

Pluggable terminal blocks, Rated current: 12A. Rated voltage (III/2)  
: 320V, pitch: 5.08mm, Color: green, Contact surface



### **2EDG-STD-5.0**

Pluggable terminal blocks, Rated current: 24A. Rated voltage (III/2)  
: 250V, pitch: 5.0mm, Color: green, Contact surface



### **2EDG-STD-5.08**

Pluggable terminal blocks, Rated current: 24A. Rated voltage (III/2)  
: 250V, pitch: 5.08mm, Color: green, Contact surface



### **2EDG-UDB-5.08**

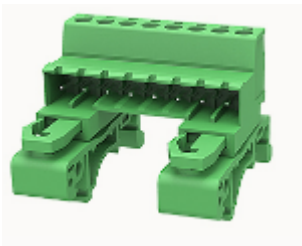


Pluggable terminal blocks, Rated current: 12 A. Rated voltage (III/2)  
: 320 V, pitch: 5.08 mm, Color: green, Contact surface



### **2EDG-UDBM-5.08**

Pluggable terminal blocks, Rated current: 12 A. Rated voltage (III/2)  
: 320 V, pitch: 5.08 mm, Color: green, Contact surface



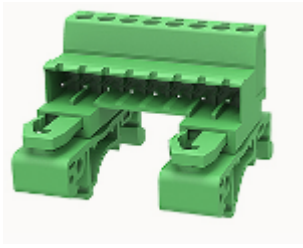
### **2EDG-URK-5.08**

Pluggable terminal blocks, Rated current: 20 A. Rated voltage (III/2)  
: 320 V, pitch: 5.08 mm, Color: green, Contact surface



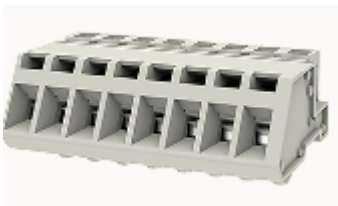
### **5EDG-STD-10.16**

Pluggable terminal blocks, Rated current: 57 A. Rated voltage (III/2)  
: 1000 V, pitch: 10.16 mm, Color: green, Contact surface



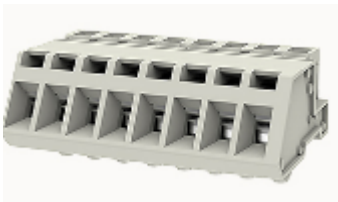
### **2EDG-UDBN-5.08**

Pluggable terminal blocks, Rated current: 12A. Rated voltage (III/2)  
: 320V, pitch: 5.08mm, Color: green, Contact surface



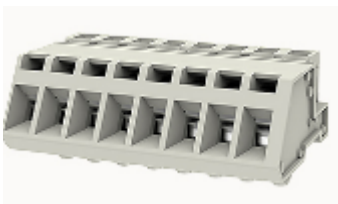
### **8EDG-STDC-5.0**

Pluggable terminal blocks, Rated current: 20A. Rated voltage (III/3)  
: 320V, pitch: 5.0mm, Color: gray, Contact surface



### **8EDG-STDM-5.0**

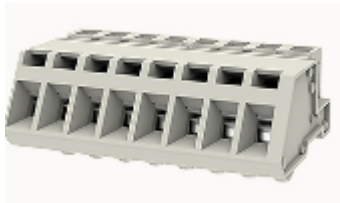
Pluggable terminal blocks, Rated current: 20A. Rated voltage (III/3)  
: 320V, pitch: 5.0mm, Color: gray, Contact surface



### **8EDG-STDB-5.0**

Pluggable terminal blocks, Rated current: 20A. Rated voltage (III/3)  
: 320V, pitch: 5.0mm, Color: gray, Contact surface

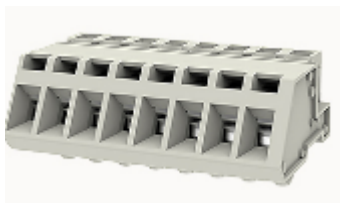
---



### **8EDG-STDBM-7.5**

Pluggable terminal blocks, Rated current: 20A. Rated voltage (III/3)  
: 400V, pitch: 7.5mm, Color: gray, Contact surface

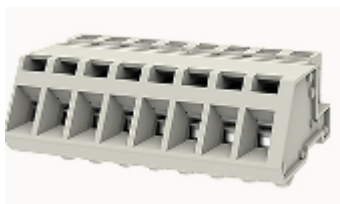
---



### **8EDG-STD-5.0**

Pluggable terminal blocks, Rated current: 20A. Rated voltage (III/3)  
: 320V, pitch: 5.0mm, Color: gray, Contact surface

---



### **8EDG-STDBM-5.0**

Pluggable terminal blocks, Rated current: 20A. Rated voltage (III/2)  
: 320V, pitch: 5.0mm, Color: gray, Contact surface

## По вопросам продаж и поддержки обращайтесь:

Алматы (727)345-47-04  
Ангарск (3955)60-70-56  
Архангельск (8182)63-90-72  
Астрахань (8512)99-46-04  
Барнаул (3852)73-04-60  
Белгород (4722)40-23-64  
Благовещенск (4162)22-76-07  
Брянск (4832)59-03-52  
Владивосток (423)249-28-31  
Владикавказ (8672)28-90-48  
Владимир (4922)49-43-18  
Волгоград (844)278-03-48  
Вологда (8172)26-41-59  
Воронеж (473)204-51-73  
Екатеринбург (343)384-55-89

Иваново (4932)77-34-06  
Ижевск (3412)26-03-58  
Иркутск (395)279-98-46  
Казань (843)206-01-48  
Калининград (4012)72-03-81  
Калуга (4842)92-23-67  
Кемерово (3842)65-04-62  
Киров (8332)68-02-04  
Коломна (4966)23-41-49  
Кострома (4942)77-07-48  
Краснодар (861)203-40-90  
Красноярск (391)204-63-61  
Курск (4712)77-13-04  
Курган (3522)50-90-47  
Липецк (4742)52-20-81

Магнитогорск (3519)55-03-13  
Москва (495)268-04-70  
Мурманск (8152)59-64-93  
Набережные Челны (8552)20-53-41  
Нижний Новгород (831)429-08-12  
Новокузнецк (3843)20-46-81  
Ноябрьск (3496)41-32-12  
Новосибирск (383)227-86-73  
Омск (3812)21-46-40  
Орел (4862)44-53-42  
Оренбург (3532)37-68-04  
Пенза (8412)22-31-16  
Петрозаводск (8142)55-98-37  
Псков (8112)59-10-37  
Пермь (342)205-81-47

Ростов-на-Дону (863)308-18-15  
Рязань (4912)46-61-64  
Самара (846)206-03-16  
Санкт-Петербург (812)309-46-40  
Саратов (845)249-38-78  
Севастополь (8692)22-31-93  
Саранск (8342)22-96-24  
Симферополь (3652)67-13-56  
Смоленск (4812)29-41-54  
Сочи (862)225-72-31  
Ставрополь (8652)20-65-13  
Сургут (3462)77-98-35  
Сыктывкар (8212)25-95-17  
Тамбов (4752)50-40-97  
Тверь (4822)63-31-35

Тольятти (8482)63-91-07  
Томск (3822)98-41-53  
Тула (4872)33-79-87  
Тюмень (3452)66-21-18  
Ульяновск (8422)24-23-59  
Улан-Удэ (3012)59-97-51  
Уфа (347)229-48-12  
Хабаровск (4212)92-98-04  
Чебоксары (8352)28-53-07  
Челябинск (351)202-03-61  
Череповец (8202)49-02-64  
Чита (3022)38-34-83  
Якутск (4112)23-90-97  
Ярославль (4852)69-52-93

**Россия** +7(495)268-04-70

**Казахстан** +(727)345-47-04

**Беларусь** +(375)257-127-884

**Узбекистан** +998(71)205-18-59

**Киргизия** +996(312)96-26-47

эл.почта: [doc@nt-rt.ru](mailto:doc@nt-rt.ru) || сайт: <https://degson.nt-rt.ru>